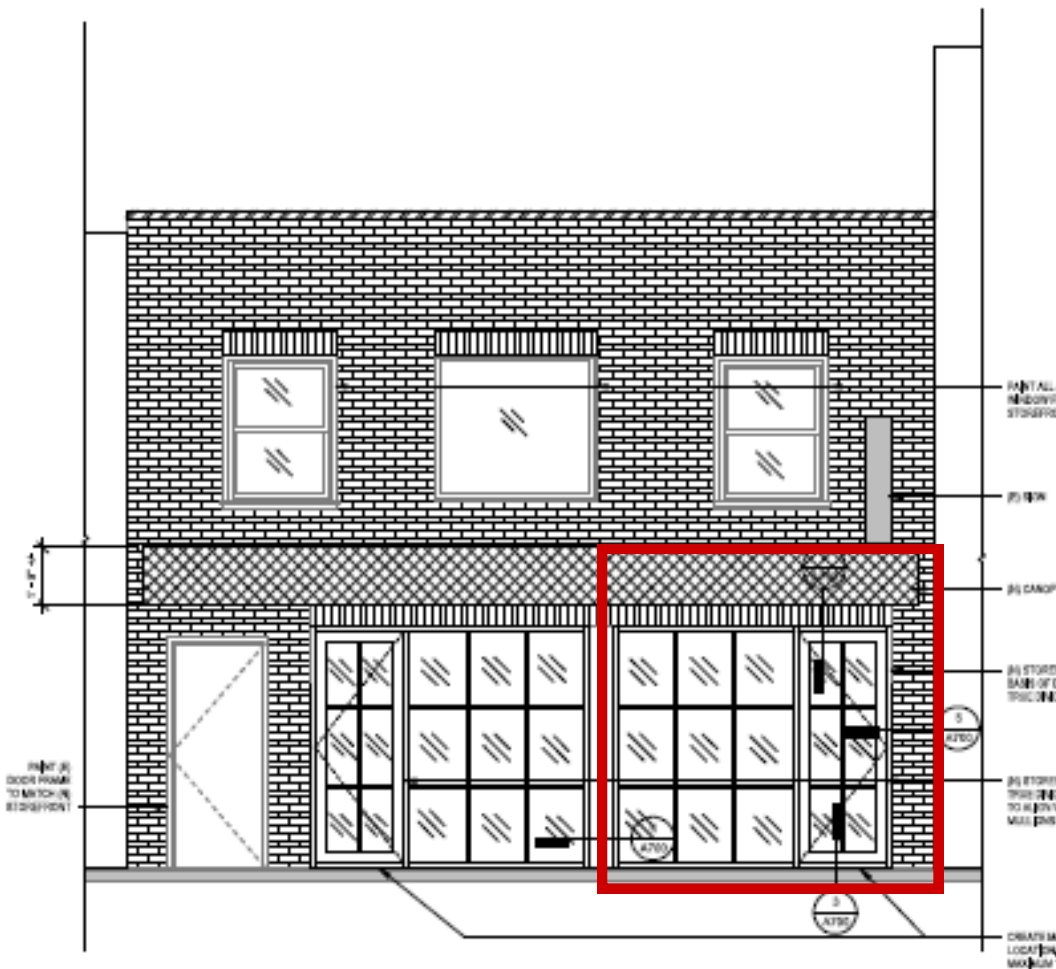


FOR LEASE



175 N 1st Street, Ste B, Kalama WA 98625

CHRIS ROEWE

Owner/Broker

C. 360.556.5101

chris@woodfordcre.com

LINDSAY JOHNSON

Licensed Assistant

O. 360.501.5500

lindsay@woodfordcre.com

Exclusively Offered By:



ABOUT THE PROPERTY

Step into success with this newly remodeled retail space in downtown Kalama. Located in the heart of the city's main trade area, it offers excellent visibility, consistent high traffic, and immediate access from I-5. The 1,005-square-foot layout features a dedicated storage room, a bathroom, and a spacious open floor plan. The space is offered at \$1,700 per month plus utilities and will be delivered in Q2 2026 with high-end finishes. Contact us today for more information and estimated finishes.

