

FIVEPLEX FOR SALE

1023 16th Avenue
Longview, WA 98632

\$725,000

www.woodfordcre.com

Chris Roewe
Owner/Broker
C. 360.556.5101
chris@woodfordcre.com







Lindsay Johnson
Licensed Assistant
360.501.5500
lindsay@woodfordcre.com

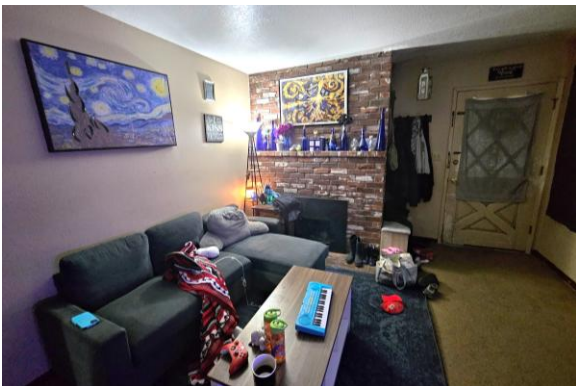




ABOUT THE PROPERTY

Fantastic investment opportunity in the heart of Longview, just blocks from Lake Sacajawea! This well-maintained five-plex offers 4,000 SF of total living space on a 6,000 SF lot, featuring five spacious 2-bedroom, 1-bathroom units. Each unit offers comfortable layouts, with select units featuring fireplaces and in-unit laundry hookups. Additional features include a five-car carport, exterior storage, and coin-operated laundry machines that transfer with the sale. With a mix of stable, long-term tenants already in place, the property generates solid income and offers strong upside potential through increased occupancy, value-add improvements, and rent adjustments to current market rates. Offered at a 5.7% CAP rate and connected to Longview utilities, this is a solid, income-producing asset—perfect for any investor looking to expand their portfolio. Occupied interior tours available upon mutual acceptance.

	Address	1023 16th Avenue, Longview, WA 98632
	Offering Price	\$725,000
	Price Per SF	\$181.25
	Total Land Area	6,000 SF
	Building Size	4,000 SF
	Parcel	01067





INCOME	Unit Type	Lease Expires	Base Monthly Income
Apt 1	2 Bed/1 Bath	Month to Month	\$1,125.00
Apt 2	2 Bed/1 Bath	Month to Month	\$1,050.00
Apt 3 (Vacant)	2 Bed/1 Bath	Month to Month	\$1,200.00
Apt 4	2 Bed/1 Bath	Month to Month	\$1,050.00
Apt 5	2 Bed/1 Bath	Month to Month	\$1,175.00
Laundry Income (Annual Amount)			\$720.00
Scheduled Gross Annual Income			\$67,200.00
Vacancy Factor (3%)			\$2,000.00
Effective (Adjusted) Gross Annual Income:			\$65,920.00
EXPENSES			
Property Taxes			\$5,247.00
Property Insurance			\$3,470.00
Electricity			\$575.00
Management Fees (7%)			\$4,563.00
Water/Sewer/Garbage			\$5,763.00
Landscaping			\$600.00
Repairs & Maintenance			\$4,177.00
Total Expenses			\$24,395.00
Net Operating Income (NOI)			\$41,525.00





 woodfordcre.com

 chris@woodfordcre.com

 (P) 360.501.5500

 208 Vine St., Kelso, WA

The information contained herein has been obtained from sources we understand to be reliable. Whilst we do not doubt its accuracy it has not been verified & we make no guarantees, warranty or representations about it. Any projections, opinions, assumptions or estimates used are for example only. You & your advisors should conduct a careful independent investigation of the property to determine the property's satisfaction to your needs.

© Woodford Commercial Real Estate.