

RETAIL/OFFICE FOR LEASE

RETAIL/OFFICE LEASE LOCATION

1236 14TH AVE
LONGVIEW WA 98632

\$ 3,000
PLUS UTILITIES

PER
MONTH

**SF
+/- 6,300**

SPACE
SIZE

ABOUT THE PROPERTY

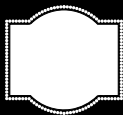
Discover a prime commercial opportunity in the heart of downtown! This 6,300 SF unit offers a versatile layout perfect for a variety of businesses. Featuring a large central room with tall ceilings, ideal for displays, gatherings, or workstations, the space is complemented by surrounding private offices, two bathrooms, a kitchen, and a generous mezzanine area for additional storage or creative use. With ample parking nearby and high visibility in a bustling area, this property is designed to attract customers and support business growth. Don't miss the chance to establish your vision in this dynamic, centrally located space! Offered at \$3,000 per month plus utilities and Insurance, Contact us today for more information or to schedule your private tour



PROPERTY DETAIL



CLOSE TO
INTERSTATE 5



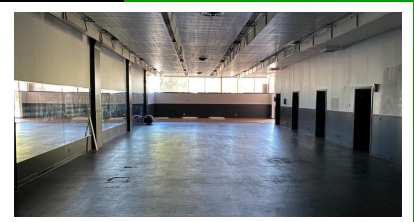
SIGNAGE
AVAILABLE



AMPLE PARKING
NEARBY



PARCEL
00551



woodfordcre.com



todd@woodfordcre.com

GET IN TOUCH

Todd Wade
Broker
C. (360) 601-9700

Hayden Wade
Licensed Assistant
C. (360) 596-6605



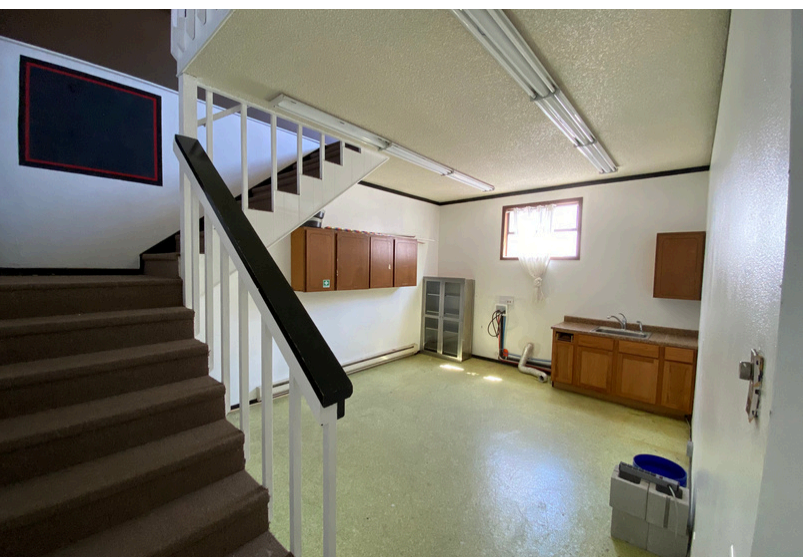
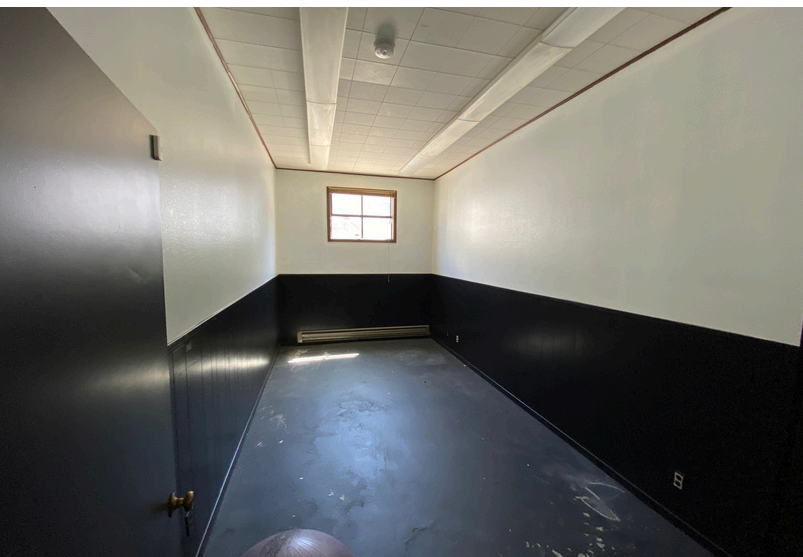
(360) 501-5500



hayden@woodfordcre.com



RETAIL / OFFICE FOR LEASE



The information contained herein has been obtained from sources we understand to be reliable. Whilst we do not doubt its accuracy it has not been verified & we make no guarantees, warranty or representations about it. Any projections, opinions, assumptions or estimates used are for example only. You & your advisors should conduct a careful independent investigation of the property to determine the property's satisfaction to your needs. © Woodford Commercial Real Estate.