

FOURPLEX FOR SALE

1921 & 1923 Teresa Way
Kelso, WA 98626

\$550,000



Chris Roewe
Owner/Broker
C. 360.556.5101
chris@woodfordcre.com







Lindsay Johnson
Licensed Assistant
360.501.5500
lindsay@woodfordcre.com

www.woodfordcre.com



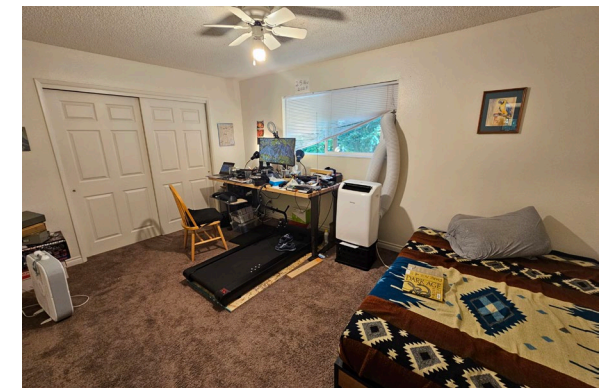
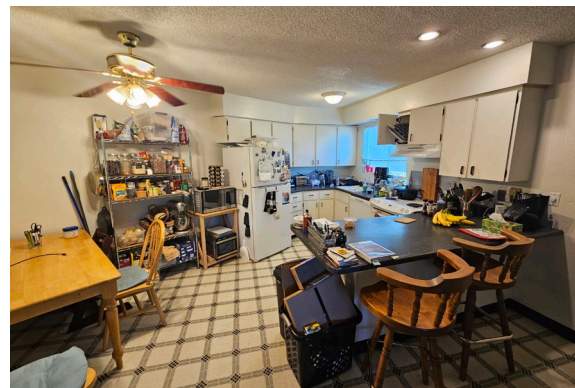
ABOUT THE PROPERTY

Explore a rare investment opportunity with this double duplex package in Kelso, ideally situated on a spacious 25,700 SF lot with a serene, wooded backdrop, at the end of a dead-end road. The lower duplex features a classic oversized side-by-side layout with two 1-bedroom, 1-bathroom units, each offering a covered patio and carport parking. The upper duplex offers a multilevel design, including one 2-bedroom, 2-bathroom unit and one 2-bedroom, 1-bathroom unit, with three car garage for covered parking. Each unit is equipped with laundry hook-ups for added convenience. With stable, long-term tenants already in place, this property generates consistent income and presents strong upside potential through value-add improvements and rent adjustments to match current market rates. Currently offered at a 6.4% cap rate and served by Kelso utilities, this is a solid opportunity for investors looking to grow their portfolio or secure a dependable income-producing asset. Don't miss out, contact us today for more information.

	Address	1921 & 1923 Teresa Way, Kelso WA 98626	
	Offering Price	\$550,000	
	Price Per SF	\$138.05	
	Total Land Area	25,700 SF	
	Building Size	3,984 SF;	1921 Teresa Way: 2,484 SF 1923 Teresa Way: 1,500 SF
	Parcel	24300200	



INCOME	Unit Type	SF	Lease Expires	Base Monthly Income
1921 Unit 1	2 Bed/2 Bath	1,242 SF		\$1,195.00
1921 Unit 2	2 Bed/1 Bath	1,242 SF		\$1,150.00
1923 Unit 1	1 Bed/1 Bath	750 SF		\$995.00
1923 Unit 2	1 Bed/1 Bath	750 SF		\$825.00
Scheduled Gross Annual Income				\$49,980.00
Vacancy Factor (3%)				\$1,500.00
Effective (Adjusted) Gross Annual Income:				\$48,480.00
EXPENSES				
Property Taxes				\$4,195.00
Property Insurance				\$1,126.00
Electricity			Paid by the Tenant	
Water/Sewer/Garbage				\$3,529.00
Landscaping				\$1,515.00
Repairs & Maintenance				\$2,914.00
Total Expenses				\$13,279.00
Net Operating Income (NOI)				\$35,201.00







woodfordcre.com



chris@woodfordcre.com



(P) 360.501.5500



208 Vine St., Kelso, WA

The information contained herein has been obtained from sources we understand to be reliable. Whilst we do not doubt its accuracy it has not been verified & we make no guarantees, warranty or representations about it. Any projections, opinions, assumptions or estimates used are for example only. You & your advisors should conduct a careful independent investigation of the property to determine the property's satisfaction to your needs.

© Woodford Commercial Real Estate.