

# RETAIL / OFFICE FOR LEASE

## RETAIL/OFFICE LEASE LOCATION

1044 & 1046 14TH AVE  
LONGVIEW WA 98632

**\$1,200-2,400**

PLUS NNN

PER  
MONTH

**SF  
+/- 1,200-2,400**

SPACE  
SIZE

### ABOUT THE PROPERTY

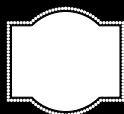
This strip center has two suites available for lease either separately or together. 1044 & 1046 is approximately 1200 SF+/- each side open floor plan with tall ceilings, and large windows with lots of natural light. Recently updated with white painted walls and floor stripped to bare concrete. A clean blank canvas to envision your business in! Asking \$1,200 per month plus Triple Net charges. This center is on 14th Avenue across from the Goodwill. Very visible, a lot of parking and good signage opportunities make this a must-see. Call today for your private tour.



### PROPERTY DETAIL



CLOSE TO  
INTERSTATE 5



SIGNAGE  
AVAILABLE



AMPLE PARKING  
SPACES



woodfordcre.com



todd@woodfordcre.com

### GET IN TOUCH

Todd Wade  
Broker  
C. (360) 601-9700

Hayden Wade  
Licensed Assistant  
C. (360) 596-6605



(360) 501-5500



hayden@woodfordcre.com





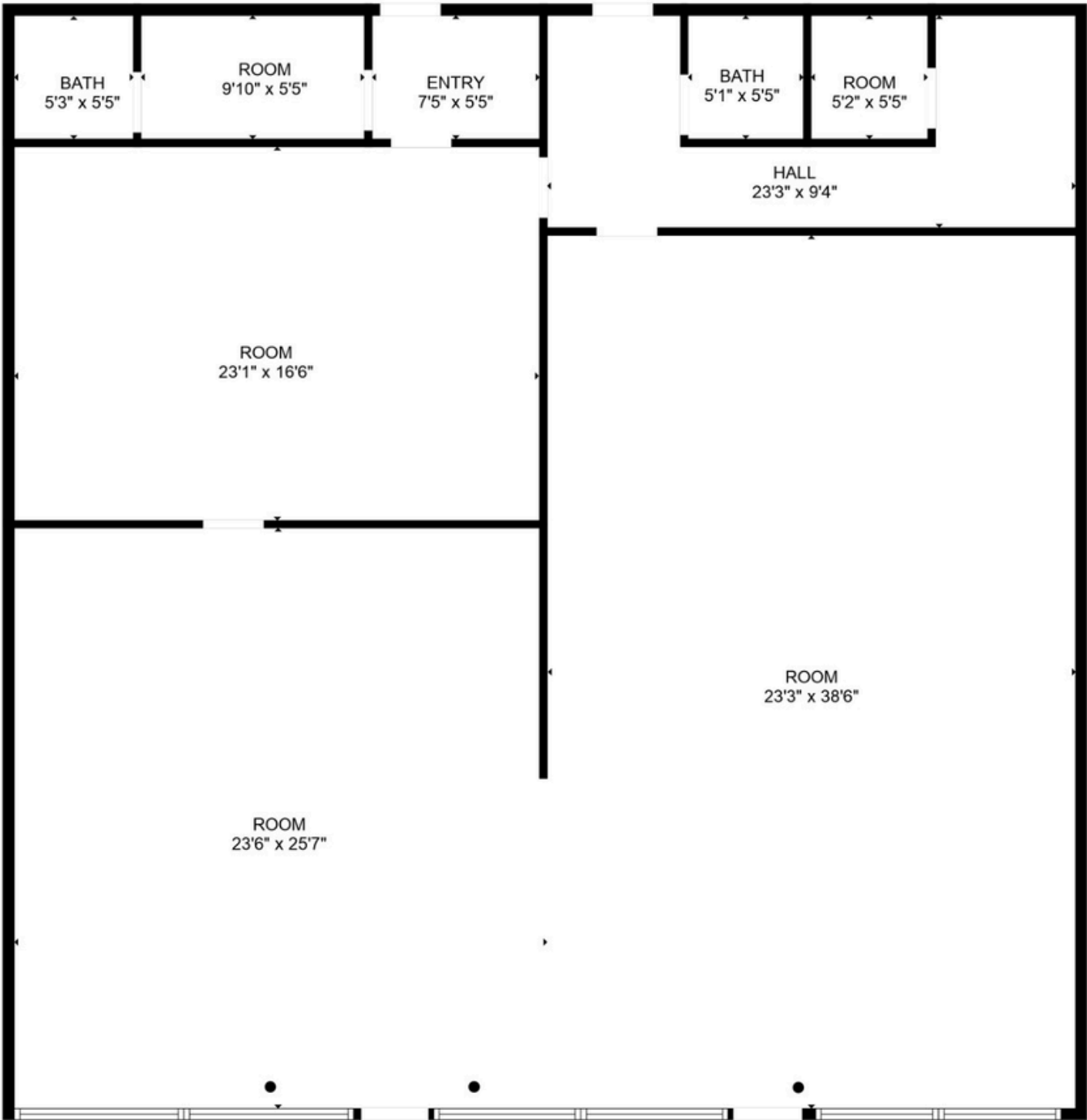
# RETAIL / OFFICE FOR LEASE



The information contained herein has been obtained from sources we understand to be reliable. Whilst we do not doubt its accuracy it has not been verified & we make no guarantees, warranty or representations about it. Any projections, opinions, assumptions or estimates used are for example only. You & your advisors should conduct a careful independent investigation of the property to determine the property's satisfaction to your needs. © Woodford Commercial Real Estate.



RETAIL FOR SUBLEASE



FLOOR PLAN CREATED BY CUBICASA APP. MEASUREMENTS DEEMED HIGHLY RELIABLE BUT NOT GUARANTEED.



The information contained herein has been obtained from sources we understand to be reliable. Whilst we do not doubt its accuracy it has not been verified & we make no guarantees, warranty or representations about it. Any projections, opinions, assumptions or estimates used are for example only. You & your advisors should conduct a careful independent investigation of the property to determine the property's satisfaction to your needs. © Woodford Commercial Real Estate.