

# OFFICE LEASE LOCATION

1000 12TH AVE  
LONGVIEW, WA 98632

PER  
MONTH

**\$ 200-700**

UTILITIES & INTERNET INCLUDED

OFFICE  
SIZES

**SF  
+/- 45-325**



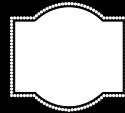
## ABOUT THE PROPERTY

Discover the perfect space for your business in the heart of Longview's business district! Lease the lower level of this office complex with options from 45-325 SF. Choose one office or multiple spaces, the possibilities are endless! Features two entrance points, 9 private offices of varying sizes and many with windows for natural lighting, a shared restroom, and breakroom. Parking and signage available! Lease rates begin at \$200 per month, utilities and internet included. Don't miss out on this incredible opportunity! Call today for more details or to schedule your private tour.

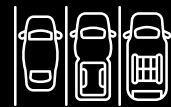
## PROPERTY DETAIL



CLOSE TO  
INTERSTATE 5



EXCELLENT  
SIGNAGE



GOOD  
PARKING



PARCEL  
0874801



woodfordcre.com



chris@woodfordcre.com

## GET IN TOUCH

Chris Roewe  
Owner/Broker

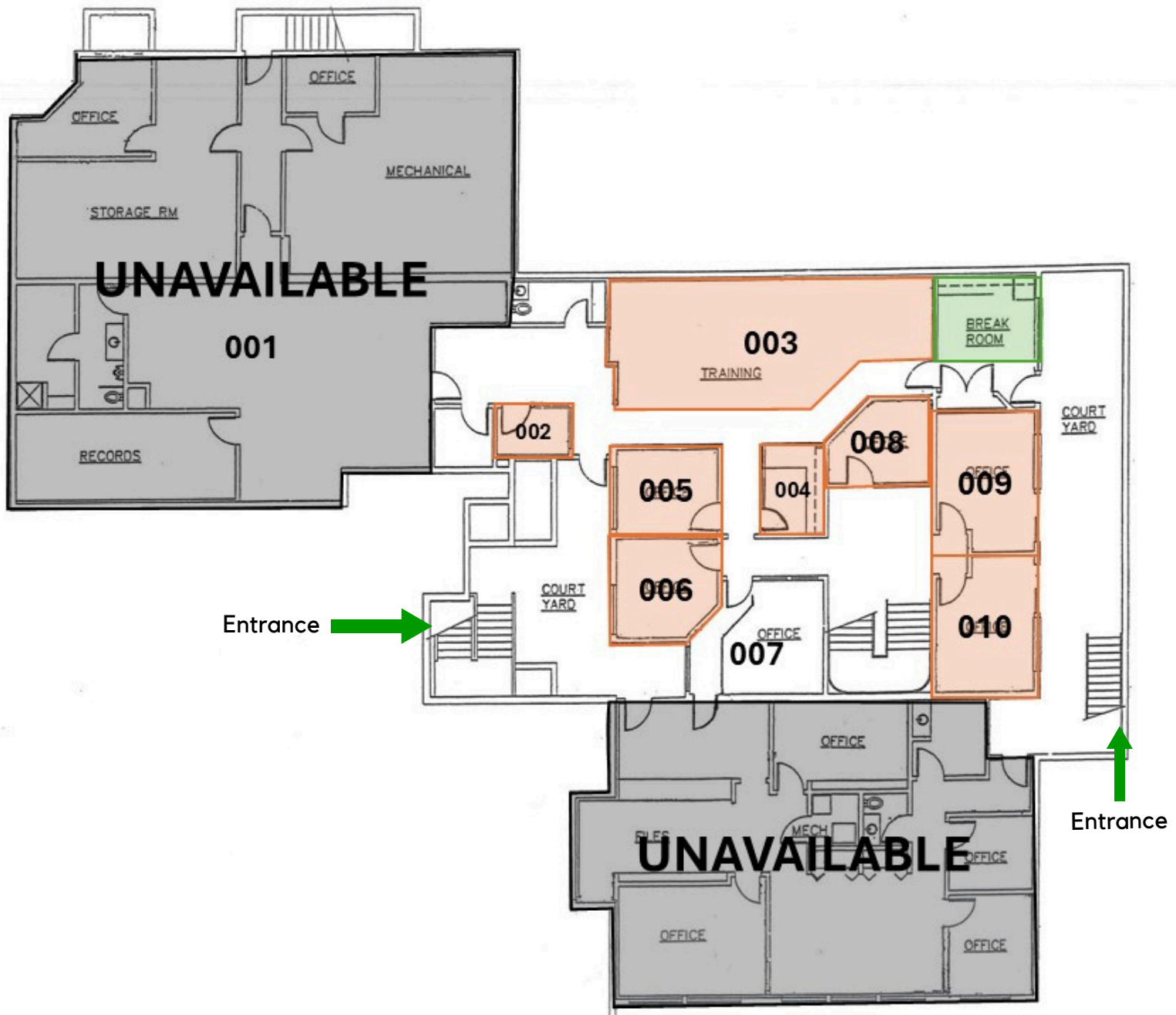
Lindsay Johnson  
Licensed Assistant



(360) 501-5500



lindsay@woodfordcre.com



Suite 002   \$200 P/M   45 SF	Suite 006   \$500 P/M   127 SF
Suite 003   \$700 P/M   325 SF	Suite 008   \$350 P/M   93 SF
Suite 004   \$350 P/M   75 SF	Suite 009   \$550 P/M   172 SF
Suite 005   \$500 P/M   110 SF	Suite 010   \$550 P/M   170 SF

### *Utilities & Internet Included*



# OFFICE FOR LEASE



SUITE 005



SUITE 006



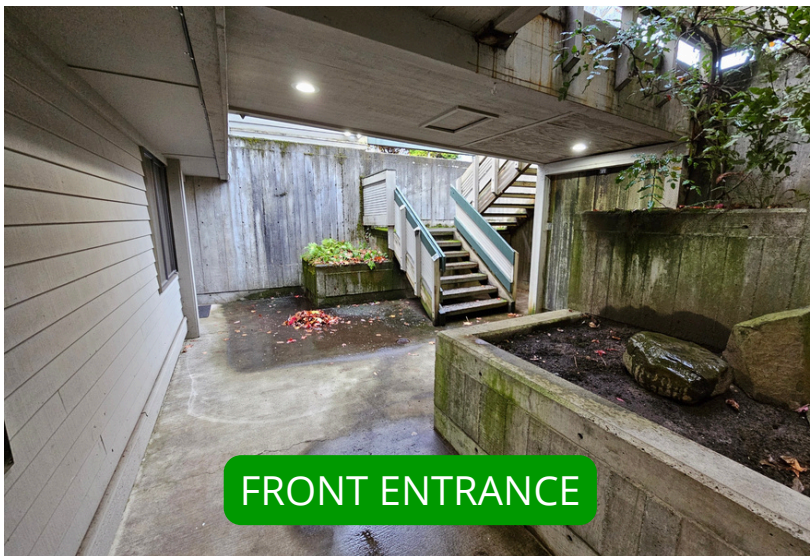
SUITE 010



SUITE 009



BREAKROOM



FRONT ENTRANCE



woodfordcre.com



chris@woodfordcre.com

**GET IN TOUCH**

Chris Roewe  
Owner/Broker

Lindsay Johnson  
Licensed Assistant



(360) 501-5500



lindsay@woodfordcre.com



# OFFICE FOR LEASE



woodfordcre.com



chris@woodfordcre.com

**GET IN TOUCH**

Chris Roewe  
Owner/Broker

Lindsay Johnson  
Licensed Assistant



(360) 501-5500



lindsay@woodfordcre.com