



RETAIL LEASE LOCATION

1801 1ST AVE
STE 1A & 1B
LONGVIEW, WA 98632

STARTING AT

\$3,500

PER
MONTH
+ UTILITIES

STARTING AT

SF 2,048

SPACE
SIZES

ABOUT THE PROPERTY

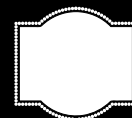
Prime leasing opportunities at The River Suite Condominiums, an ideally situated office building offering excellent visibility and stunning views of the Cowlitz River and surrounding areas. These first floor suites spans 4,095 SF, which can be divided into two separate 2,048 SF suites. These move-in ready suites feature office/medical rooms, a reception area, lobby/waiting areas, a conference room, a breakroom lounge, and five restrooms. This condo include ample parking and prominent signage opportunities. Lease rates start at \$3,500 per month, plus electricity. Don't miss out on a great opportunity, call today for your private tour.



SUITES AVAILABLE

FULL SUITE | 4,096 SF | \$6,500/MONTH
SUITE 1A | 2,048 SF | \$3,500/MONTH
SUITE 1B | 2,048 SF | \$3,500/MONTH
PLUS ELECTRICITY, PHONE & INTERNET

PROPERTY DETAIL



EXCELLENT
SIGNAGE



PLENTY OF
PARKING



woodfordcre.com



chrisroewe@hotmail.com

GET IN TOUCH

Chris Roewe
Partner/Broker

Lindsay Johnson
Licensed Assistant



(360) 501-5500



(360) 556-5101

Floor Plan Options

Full Suite 1A & 1B

\$6,500/Month

4,096 SF

Includes all of the below

Suite 1A

\$3,500/Month

2,048 SF

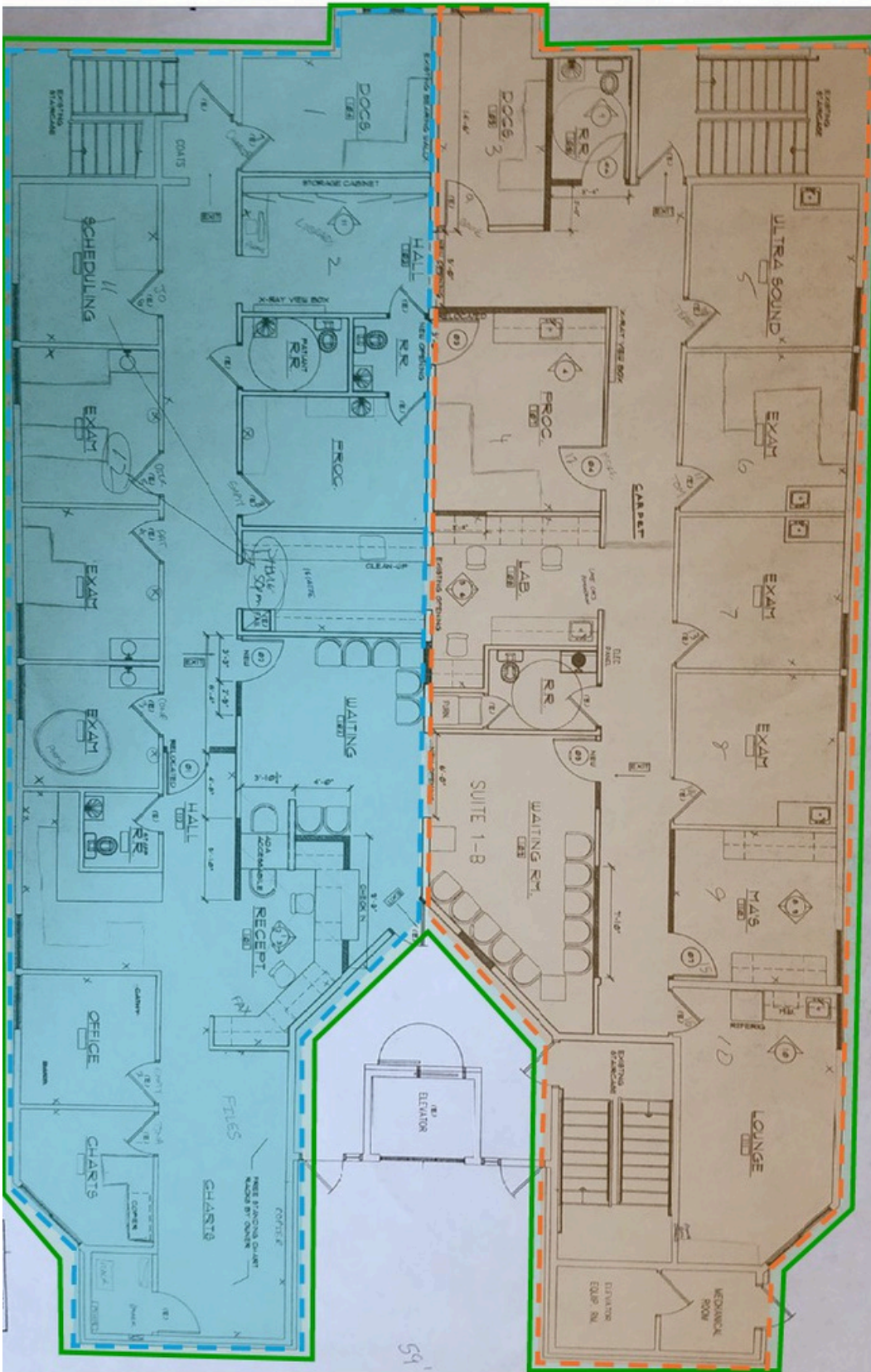
- 1 Reception/Waiting Area
- 8 Offices
- 1 Conference Room
- 3 Restrooms
- 1 Kitchenette
- 1 Breakroom

Suite 1B

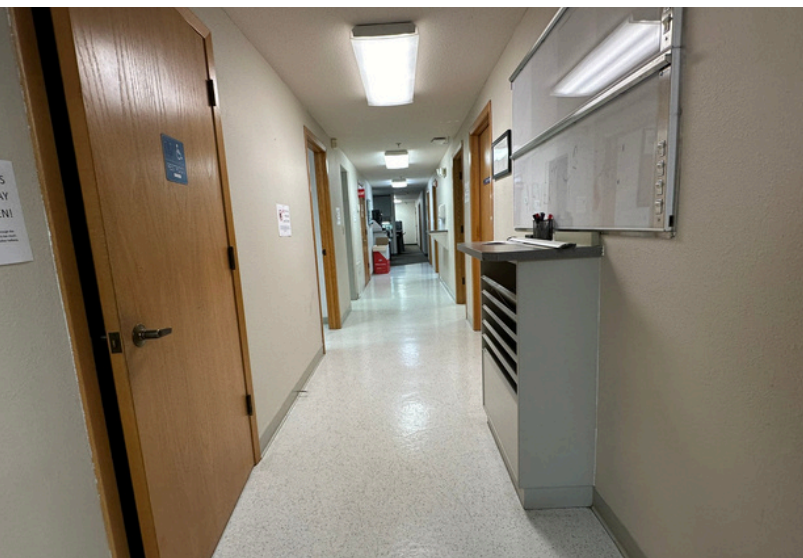
\$3,500/Month

2,048 SF

- 1 Waiting Room
- 6 Office/Medical Rooms
- 1 Conference Room
- 1 Kitchenette
- 2 Restrooms



SUITE 1A



woodfordcre.com

chrisroewe@hotmail.com

GET IN TOUCH

Chris Roewe
Partner/Broker

Lindsay Johnson
Licensed Assistant

(360) 501-5500

(360) 556-5101

SUITE 1 B



woodfordcre.com
chrisroewe@hotmail.com

GET IN TOUCH
Chris Roewe
Partner/Broker
Lindsay Johnson
Licensed Assistant

(360) 501-5500
(360) 556-5101