



# RETAIL LEASE LOCATION

1801 1ST AVE  
STE 1A & 1B  
LONGVIEW, WA 98632

STARTING AT

**\$3,500**

PER MONTH  
+ UTILITIES

STARTING AT

**SF 2,048**

SPACE SIZES

## ABOUT THE PROPERTY

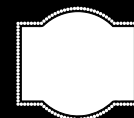
Prime leasing opportunities at The River Suite Condominiums, an ideally situated office building offering excellent visibility and stunning views of the Cowlitz River and surrounding areas. These first floor suites spans 4,095 SF, which can be divided into two separate 2,048 SF suites. These move-in ready suites feature office/medical rooms, a reception area, lobby/waiting areas, a conference room, a breakroom lounge, and five restrooms. This condo include ample parking and prominent signage opportunities. Lease rates start at \$3,500 per month, plus electricity. Don't miss out on a great opportunity, call today for your private tour.



## SUITES AVAILABLE

- FULL SUITE | 4,096 SF | \$6,500/MONTH
- SUITE 1A | 2,048 SF | \$3,500/MONTH
- SUITE 1B | 2,048 SF | \$3,500/MONTH
- PLUS ELECTRICITY, PHONE & INTERNET

## PROPERTY DETAIL



EXCELLENT SIGNAGE



PLENTY OF PARKING



woodfordcre.com



chris@woodfordcre.com

## GET IN TOUCH

Chris Roewe  
Partner Broker

Lindsay Johnson  
Licensed Assistant



(360) 501-5500



(360) 556-5101

# Floor Plan Options

## Full Suite 1A & 1B

\$6,500/Month

4,096 SF

Includes all of the below

### Suite 1A

\$3,500/Month

2,048 SF

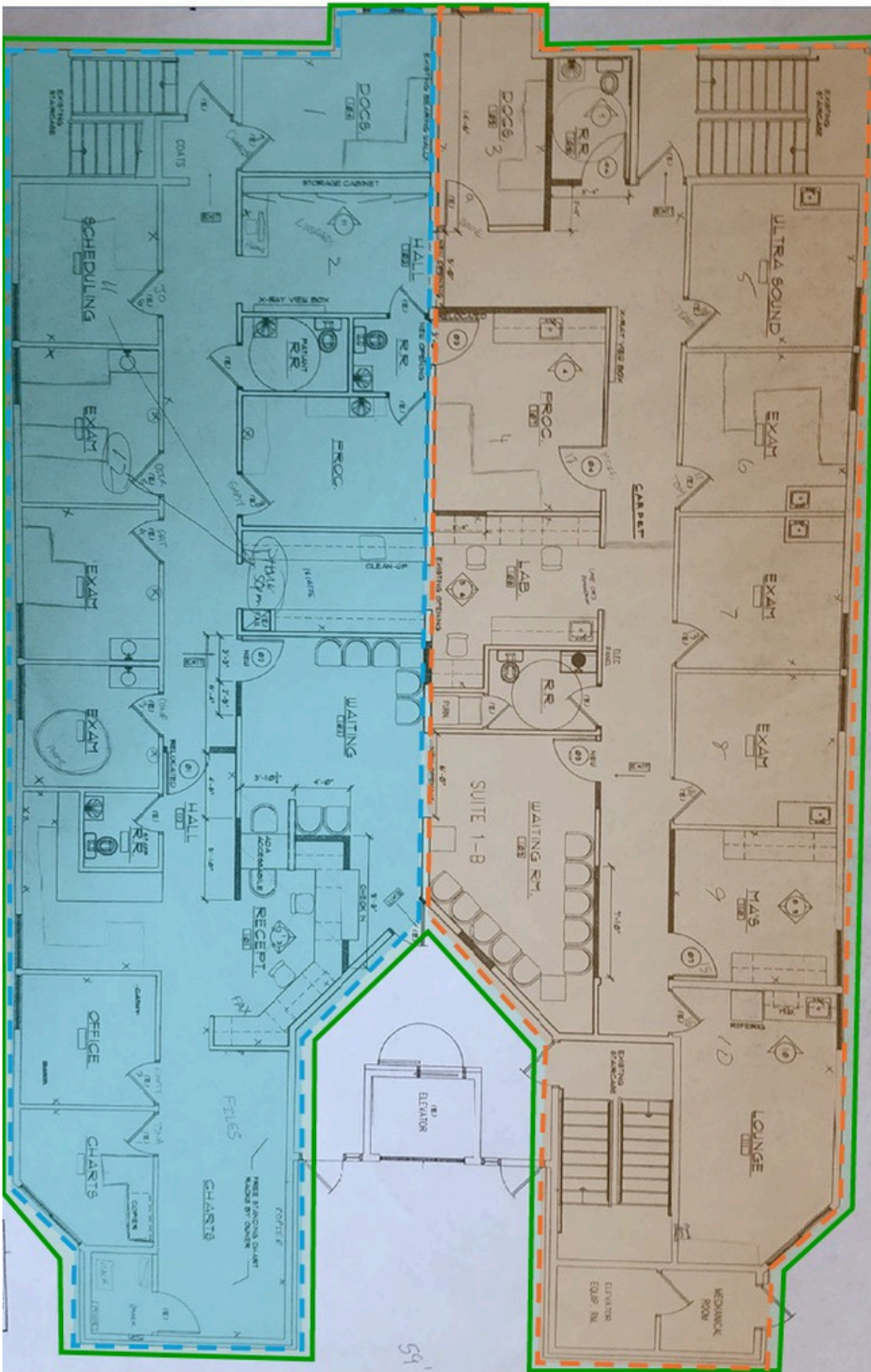
- 1 Reception/Waiting Area
- 8 Offices
- 1 Conference Room
- 3 Restrooms
- 1 Kitchenette
- 1 Breakroom

### Suite 1B

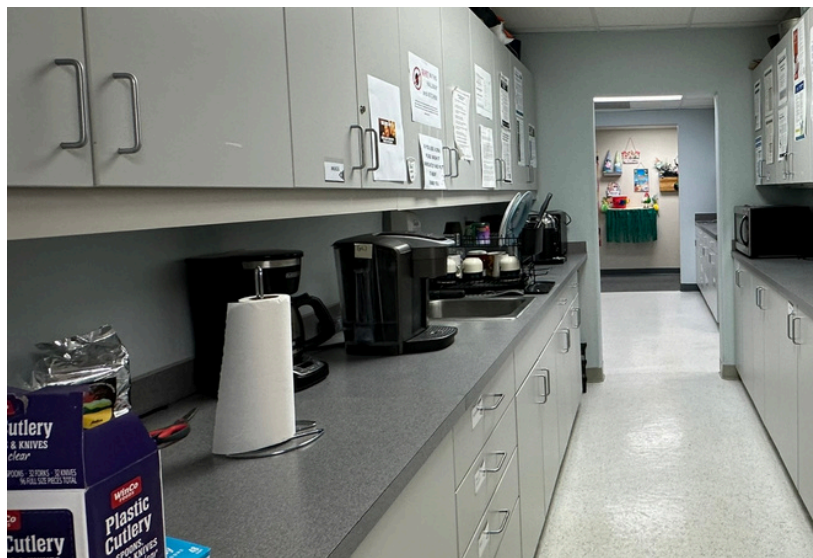
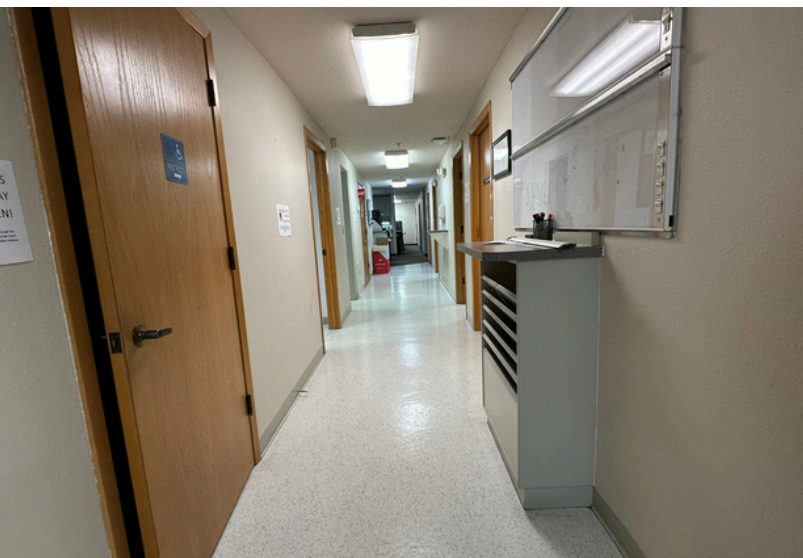
\$3,500/Month

2,048 SF

- 1 Waiting Room
- 6 Office/Medical Rooms
- 1 Conference Room
- 1 Kitchenette
- 2 Restrooms







woodfordcre.com



chris@woodfordcre.com

GET IN TOUCH

Chris Roewe  
Partner Broker

Lindsay Johnson  
Licensed Assistant



(360) 501-5500



(360) 556-5101



SUITE 1 B



woodfordcre.com



chris@woodfordcre.com

GET IN TOUCH

Chris Roewe  
Partner Broker

Lindsay Johnson  
Licensed Assistant



(360) 501-5500



(360) 556-5101