

OFFICE LEASE LOCATION

2127 8TH AVENUE
LONGVIEW WA 98632

PER
MONTH
+ UTILITIES

\$1,750

SUITE
SIZE

SF 1,500



ABOUT THE PROPERTY

Ideally located office space in the heart of Longview! This 1,500SF office suite offers a balanced floor plan featuring 4-6 spacious offices, a reception area, a conference room, ample storage, a private restroom, and a break room. What sets this space apart is the opportunity to personalize it with your choice of flooring and paint selections. This location is visible from Washington Way, with excellent parking and well-placed signage opportunities. Asking \$1,750 per month plus utilities. Don't miss out on this opportunity, call now to schedule your appointment and explore firsthand the potential of space.



PROPERTY DETAIL



25,000 VPD



CBD
Central Business District



PLENTY OF
PARKING



CLOSE TO
INTERSTATE 5



woodfordcre.com



chrisroewe@hotmail.com

GET IN TOUCH

Chris Roewe
Partner Broker

Lindsay Johnson
Licensed Assistant



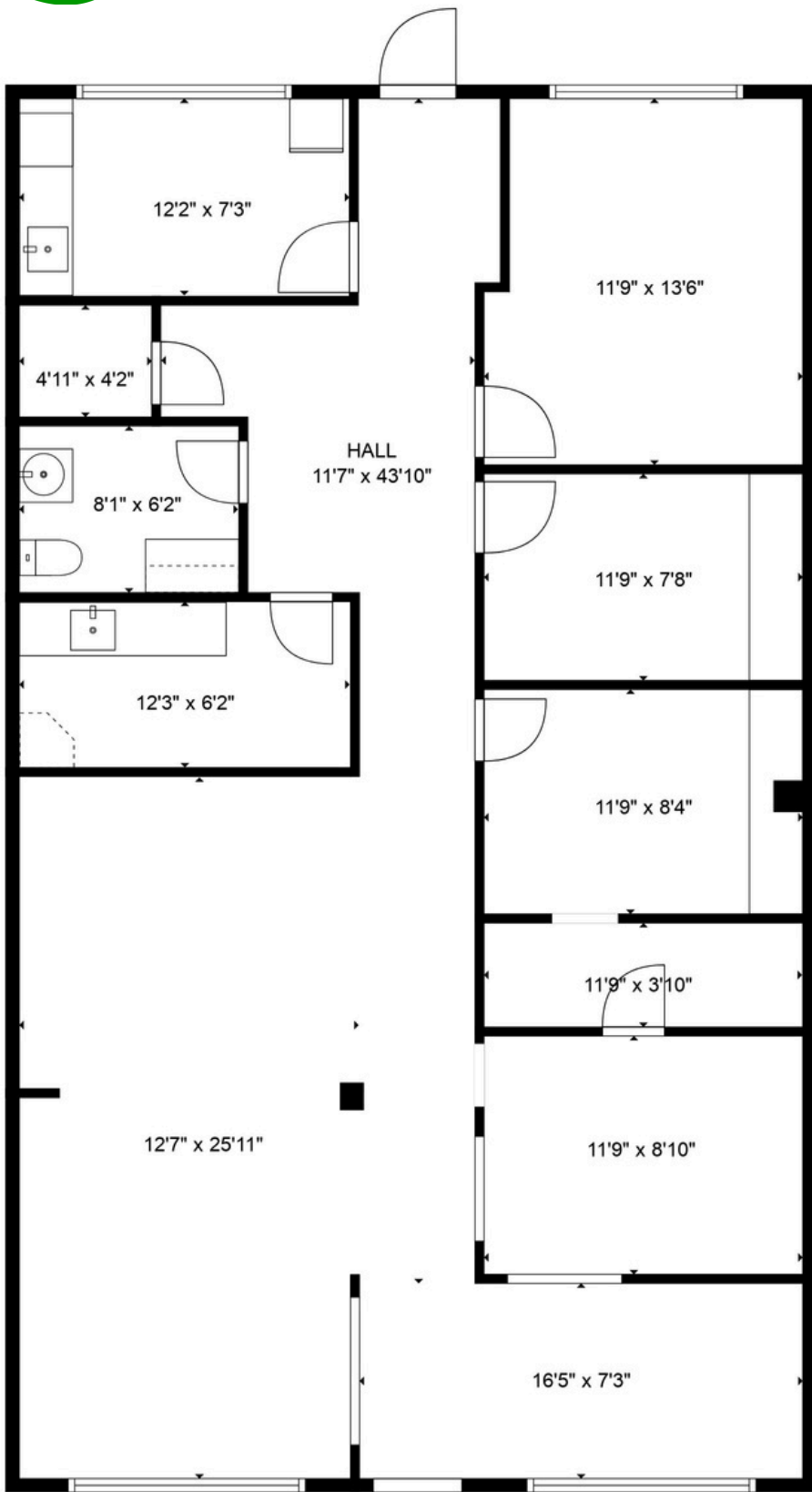
(360) 501-5500



(360) 556-5101



OFFICE FOR LEASE



TOTAL: 1,088 SF
SIZES AND DIMENSIONS ARE APPROXIMATE, ACTUAL MAY VARY.



woodfordcre.com



chrisroewe@hotmail.com

GET IN TOUCH

Chris Roewe
Partner Broker

Lindsay Johnson
Licensed Assistant



(360) 501-5500



(360) 556-5101



OFFICE FOR LEASE



The information contained herein has been obtained from sources we understand to be reliable. Whilst we do not doubt its accuracy it has not been verified & we make no guarantees, warranty, or representations about it. Any projections, opinions, assumptions or estimates used are for example only. You & your advisors should conduct a careful independent investigation of the property to determine the property's satisfaction to your needs. © Woodford Commercial Real Estate.

