

WAREHOUSE FOR LEASE

600 Mitchell Ave
Woodland, WA 98674

\$13.00-\$16.00 PSF
807 SF-17,587 SF



Chris Roewe
Owner/Broker
C. 360.556.5101
chris@woodfordcre.com

Lindsay Johnson
Licensed Assistant
360.501.5500
lindsay@woodfordcre.com

www.woodfordcre.com

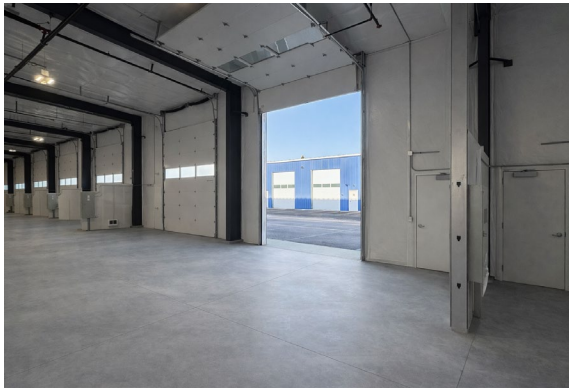


PROPERTY FEATURES

LEASE RATE	\$13.00-\$16.00 PSF + NNN
MAX CONTIGUOUS SF	807 SF – 17,587 SF
BUILDING HEIGHT	18-20ft Tall Ceilings
GRADE DOORS	One 12x15 Grade Door per Bay
POWER	3-Phase, Single Phase
FIRE SYSTEM	Fire Sprinkler System
PARKING	55 Parking Stalls
SECURITY	Partially Fenced
ZONING	Light Industrial
ROOF	Metal
BUILT	2024

ABOUT THE PROPERTY

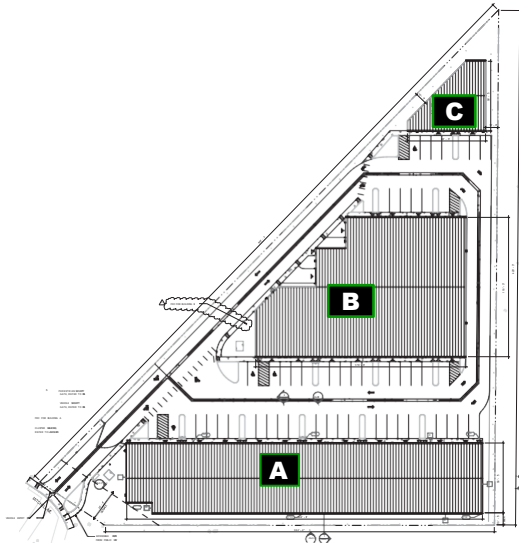
New construction warehouse off the I-5 in Woodland. This property consists of 37,076 SF of industrial flex space spread over three buildings. The leasable units range from 807 SF to 17,587 SF max contiguous areas. Each unit has a minimum of one 12x15 grade level door, 18-20 ft. tall ceilings and 3-phase! Build to suite options are available to qualified applicants. Call today for more information and to reserve your space!





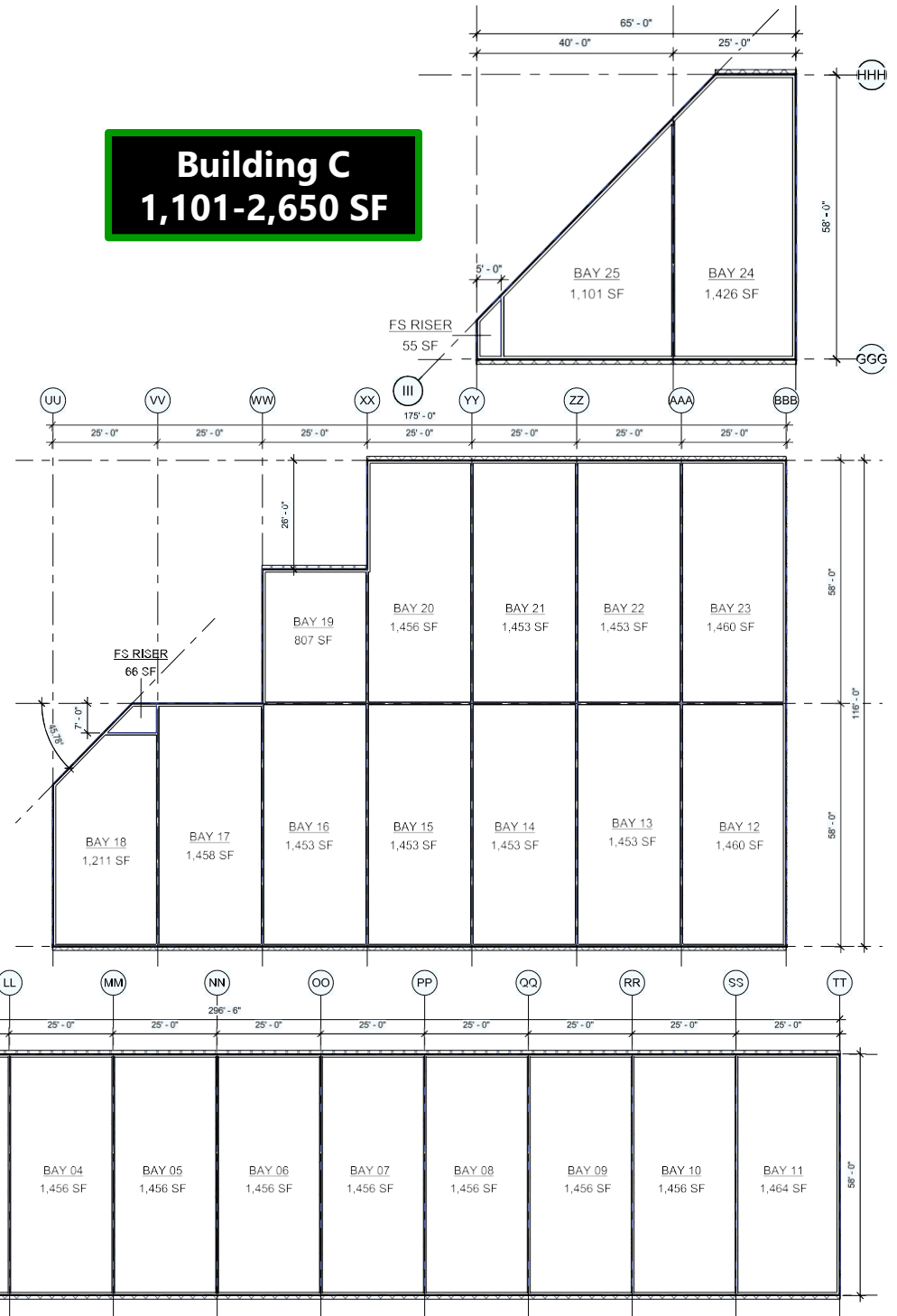
600 Mitchell Ave, Woodland WA 98674

PLAN TYPE	# OF UNITS	SF PER UNIT	SF TOTAL
24'X60'	22	1,536	33,762
BAY 19	1	807	807
BAY 20	1	1,456	1,456
BAY 25	1	1,101	1,101
PARKING STALLS	55	--	--
TOTALS	25	--	37,126

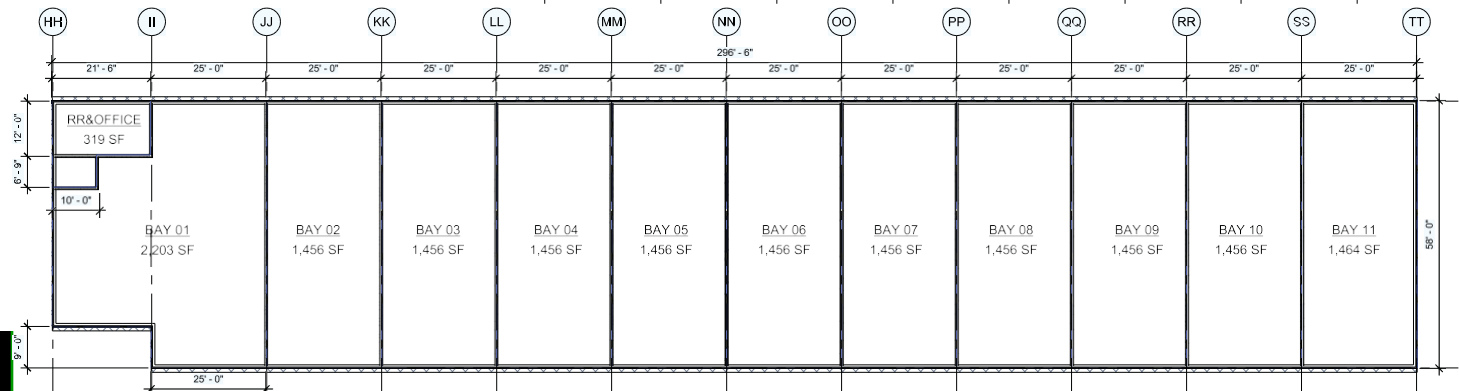


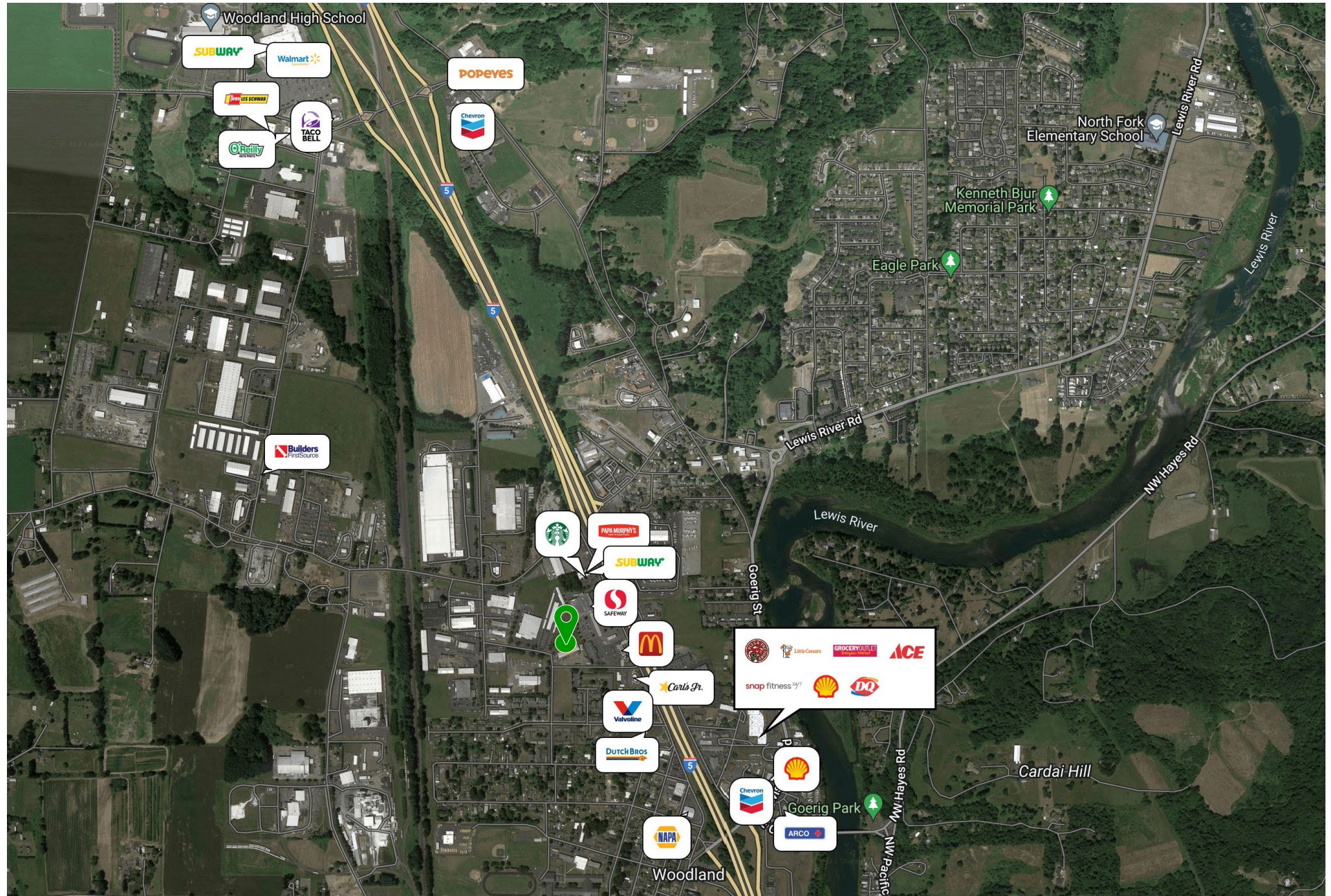
Building B
807-16,889 SF

Building C
1,101-2,650 SF



Building A
1,456-17,587 SF











Woodford

Commercial Real Estate

 woodfordcre.com

 chris@woodfordcre.com

 (P)360.501.5500

 208 Vine St., Kelso, WA 98626

The information contained herein has been obtained from sources we understand to be reliable. Whilst we do not doubt its accuracy it has not been verified & we make no guarantees, warranty or representations about it. Any projections, opinions, assumptions or estimates used are for example only. You & your advisors should conduct a careful independent investigation of the property to determine the property's satisfaction to your needs.

© Woodford Commercial Real Estate.