

# FOR LEASE

2250 Robinson Road  
Woodland, WA 98674

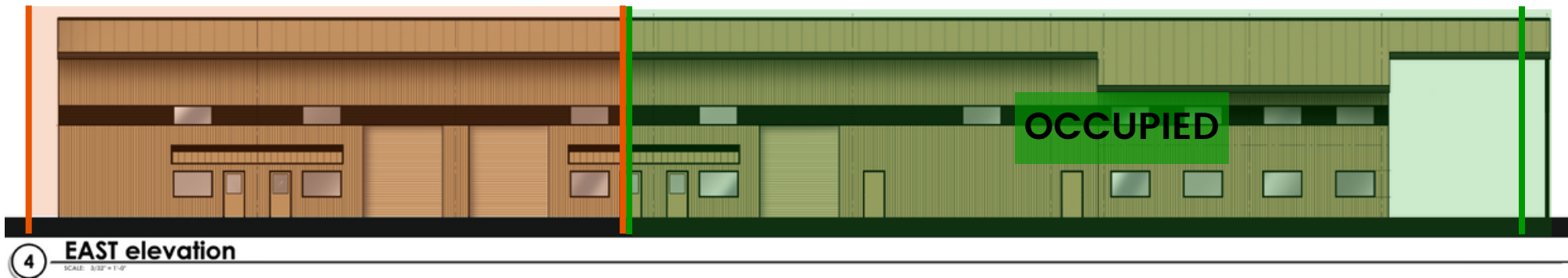
## PROPERTY INFORMATION

Price:	\$12 Per SF Per Annum + NNN
Estimated NNN:	\$2.46 Per SF Annum
Space Availability:	1,800 SF to 5,400 SF
Zoning:	Highway Commercial (C-2)
Tax ID:	507670100

## PROPERTY FEATURES

New construction and highly visible from I-5 warehouse/retail space (Zoned C-2) coming soon to Woodland just off exit 22. The available space is divisible into 1,800 SF sections and can be as large as 5,400 SF. Two large grade doors per suite, ADA restroom, 24ft tall ceilings and great exposure make this an ideal location for your business. Offices within or exterior yard space available for a surcharge in the lease rate. Lease rates start at \$1,800 per month plus triple nets and depend on size of the space. Call today to schedule your tour and reserve your space.

*\*Available April 2023\**



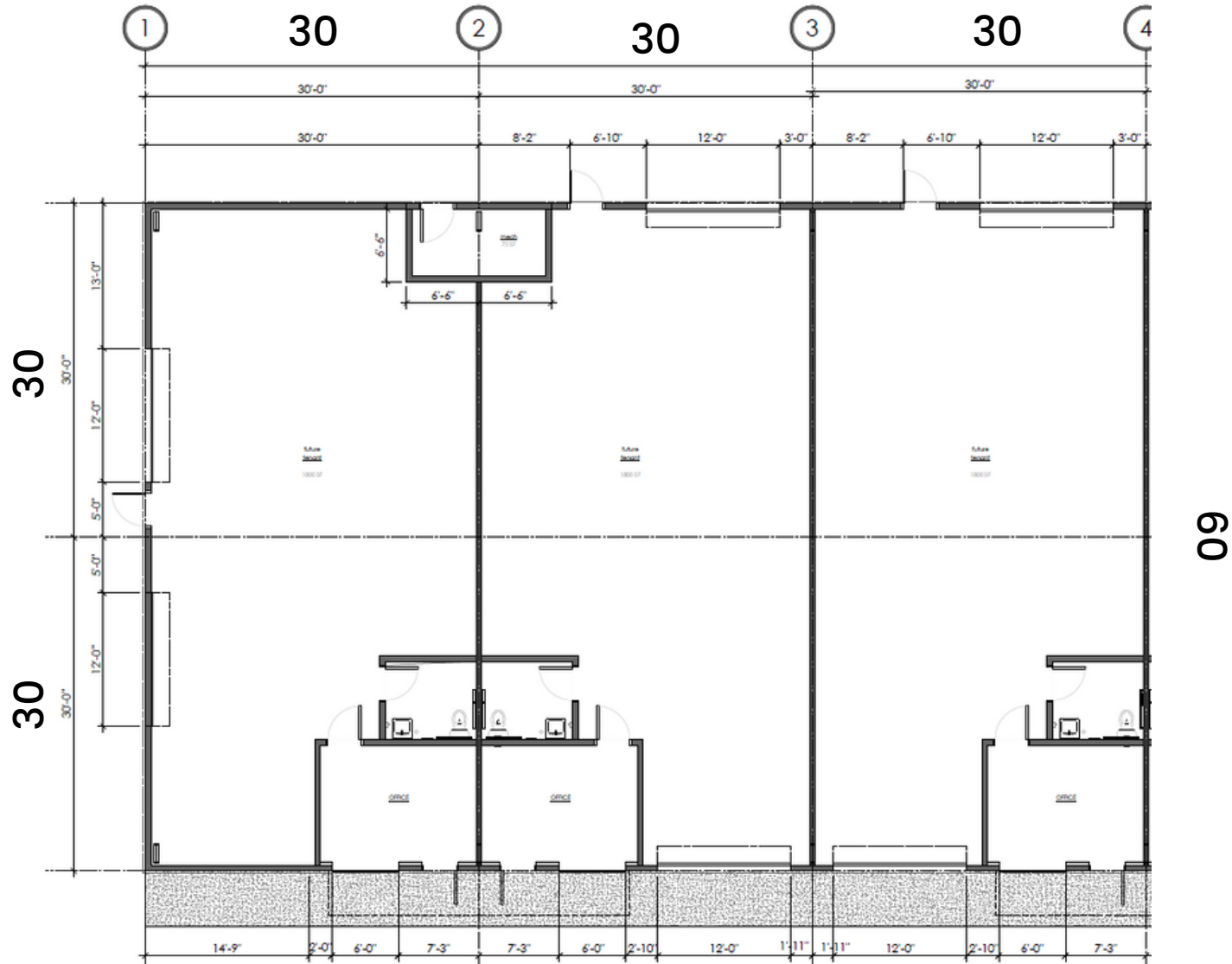
**Chris Roewe | Partner/Broker**  
C. 360.556.5101  
chrisroewe@hotmail.com

**Lindsay Johnson | Licensed Assistant**  
O. 360.501.5500  
www.woodfordcre.com



# BUILDING PLAN

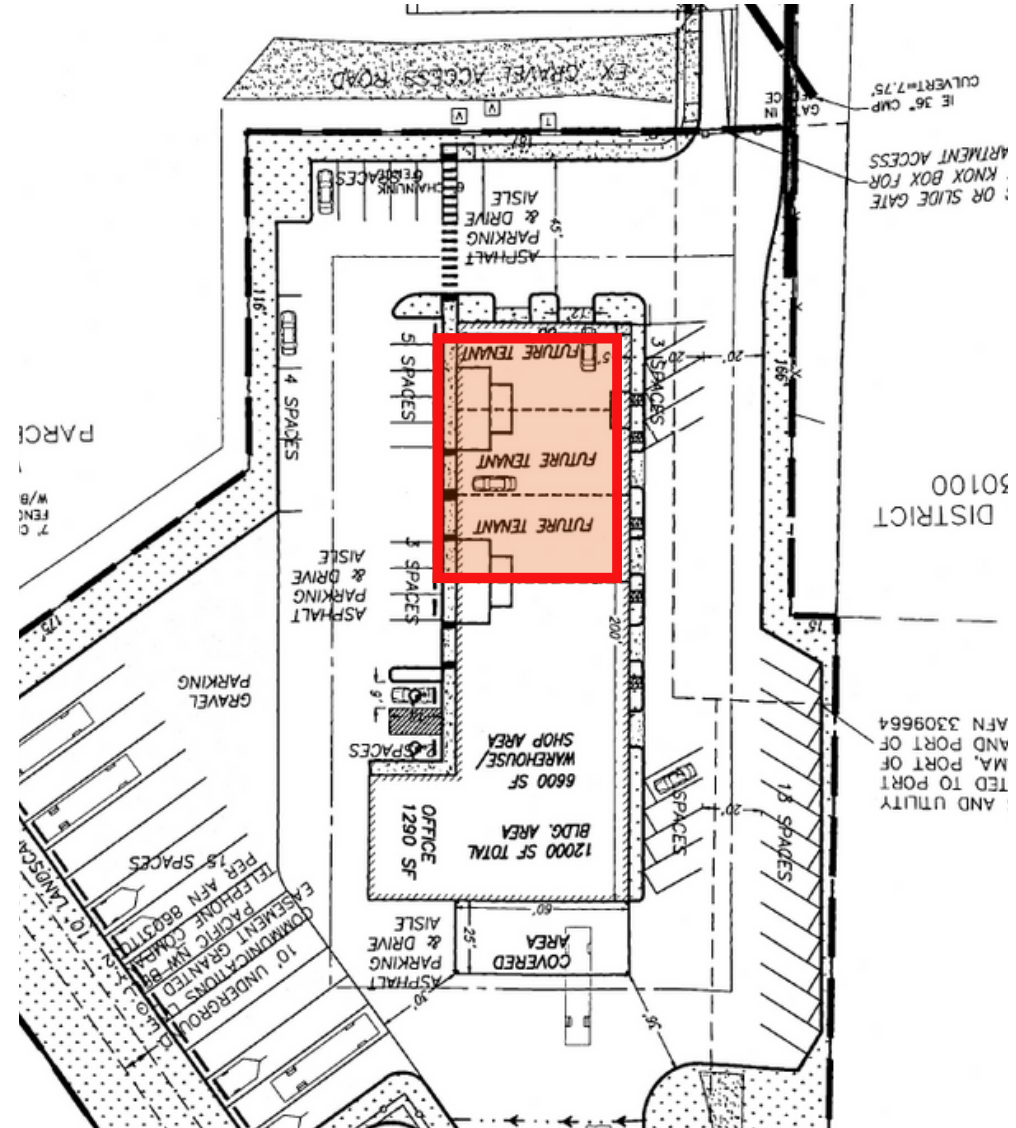
2250 Robinson Road  
Woodland, WA 98674



The information contained herein has been obtained from sources we understand to be reliable. Whilst we do not doubt its accuracy it has not been verified & we make no guarantees, warranty, or representations about it. Any projections, opinions, assumptions or estimates used are for example only. You & your advisors should conduct a careful independent investigation of the property to determine the property's satisfaction to your needs. © Woodford Commercial Real Estate.

# AERIAL

2250 Robinson Road  
Woodland, WA 98674



The information contained herein has been obtained from sources we understand to be reliable. Whilst we do not doubt its accuracy it has not been verified & we make no guarantees, warranty, or representations about it. Any projections, opinions, assumptions or estimates used are for example only. You & your advisors should conduct a careful independent investigation of the property to determine the property's satisfaction to your needs. © Woodford Commercial Real Estate.