

OFFICE FOR LEASE

OFFICE LEASE LOCATION

1106 DOUGLAS ST.
SUITE B/C
LONGVIEW WA 98632

\$ 1,100

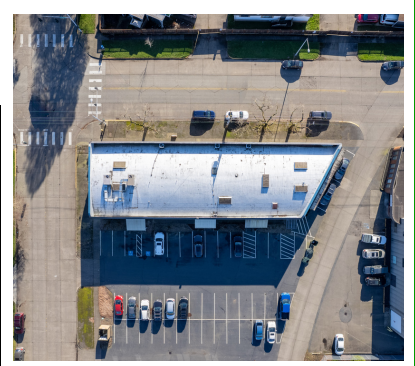
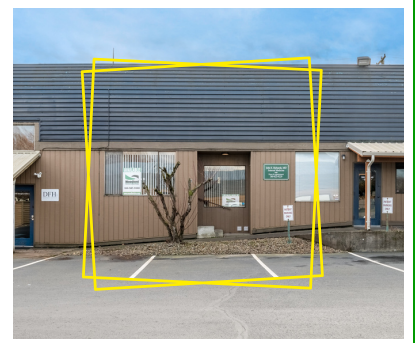
PER
MONTH
+ NNN

SF 1,500

SUITE
SIZE

ABOUT THE PROPERTY

Move-in ready office at the Douglas Center with 1,500 SF spread over two floors. The ground floor is 950 SF with three offices, two restrooms and a reception area. The second floor is approx. 600 SF set up as an open air breakroom and has lots of possible uses. Asking lease rate is \$1,100 per month plus utilities and HVAC servicing. *Free rent is available for qualified tenants.* Call today to set-up your tour and reserve this suite.



PROPERTY DETAIL



950 SF
FIRST FLOOR



600 SF
SECOND FLOOR



PLENTY OF
PARKING



FREE RENT
AVAILABLE



woodfordcre.com



chrisroewe@hotmail.com

GET IN TOUCH

Chris Roewe
Partner/Broker

Lindsay Johnson
Licensed Assistant



(360) 501-5500



(360) 556-5101



RETAIL / OFFICE FOR LEASE



The information contained herein has been obtained from sources we understand to be reliable. Whilst we do not doubt its accuracy it has not been verified & we make no guarantees, warranty, or representations about it. Any projections, opinions, assumptions or estimates used are for example only. You & your advisors should conduct a careful independent investigation of the property to determine the property's satisfaction to your needs. © Woodford Commercial Real Estate.

