

OFFICE LEASE LOCATION

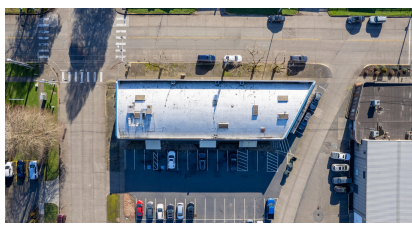
1106 DOUGLAS ST.
STE F
LONGVIEW, WA 98632

PER
MONTH +
UTILITIES

\$ **1,750**

SUITE
SIZE

SF **2,045**



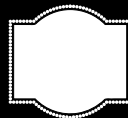
ABOUT THE PROPERTY

Rare, move-in ready medical or traditional office spaces available in this prestigious professional building of Longview. These spaces are ideally set up for medical use but could easily be used for an office space. Suite F is 2,045 SF spread over two floors. The ground floor is 1,500 SF with 6 offices/exam rooms, a large reception/waiting room, and two restrooms. The upper floor is 545 SF with a full restroom, kitchenette, and breakroom area. Asking \$1750 per month plus utilities. Call today to schedule your private tour.

PROPERTY DETAIL



GOOD
PARKING



EXCELLENT
SIGNAGE



PARCEL
08757



CLOSE TO
INTERSTATE 5



woodfordcre.com



chris@woodfordcre.com

GET IN TOUCH

Chris Roewe
Owner/Broker

Lindsay Johnson
Licensed Assistant

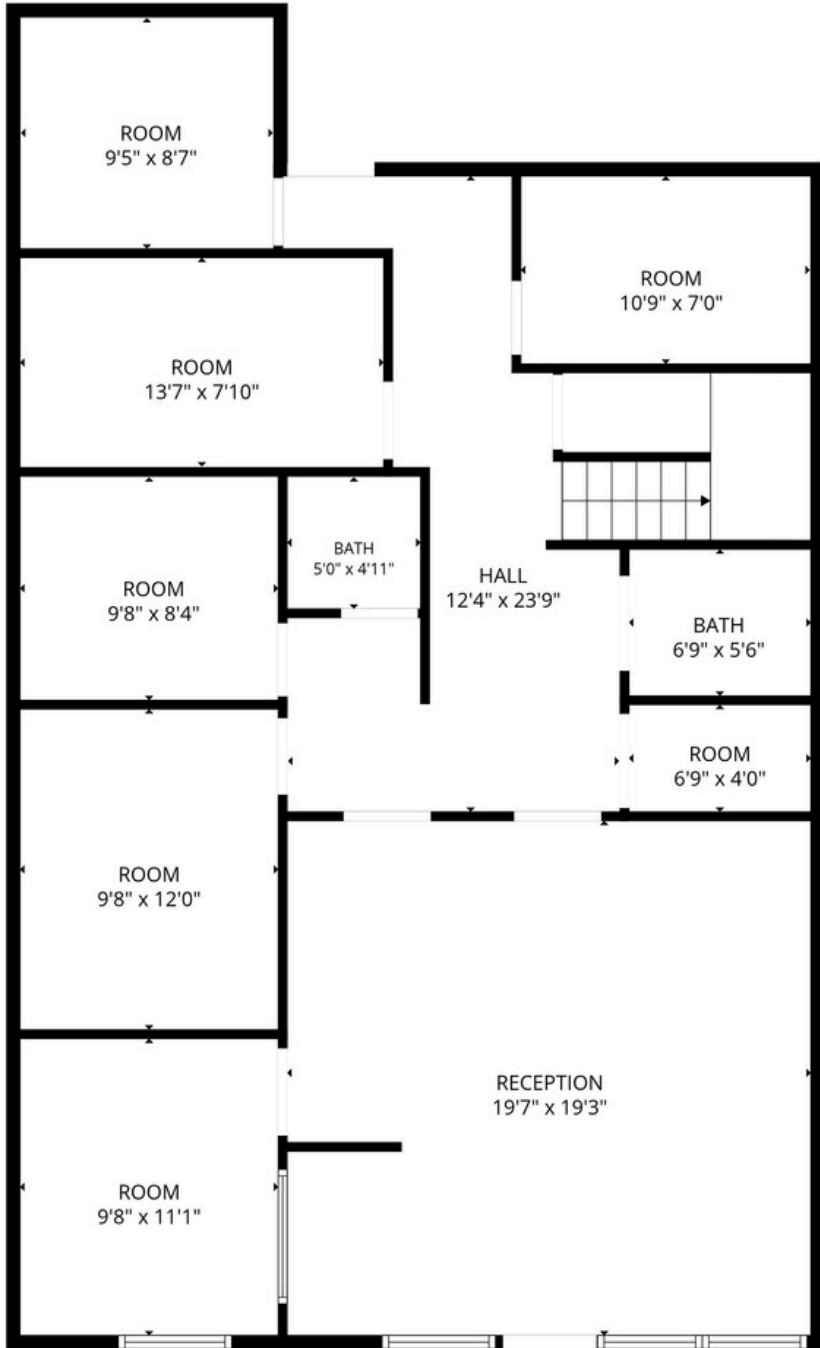


(360) 501-5500

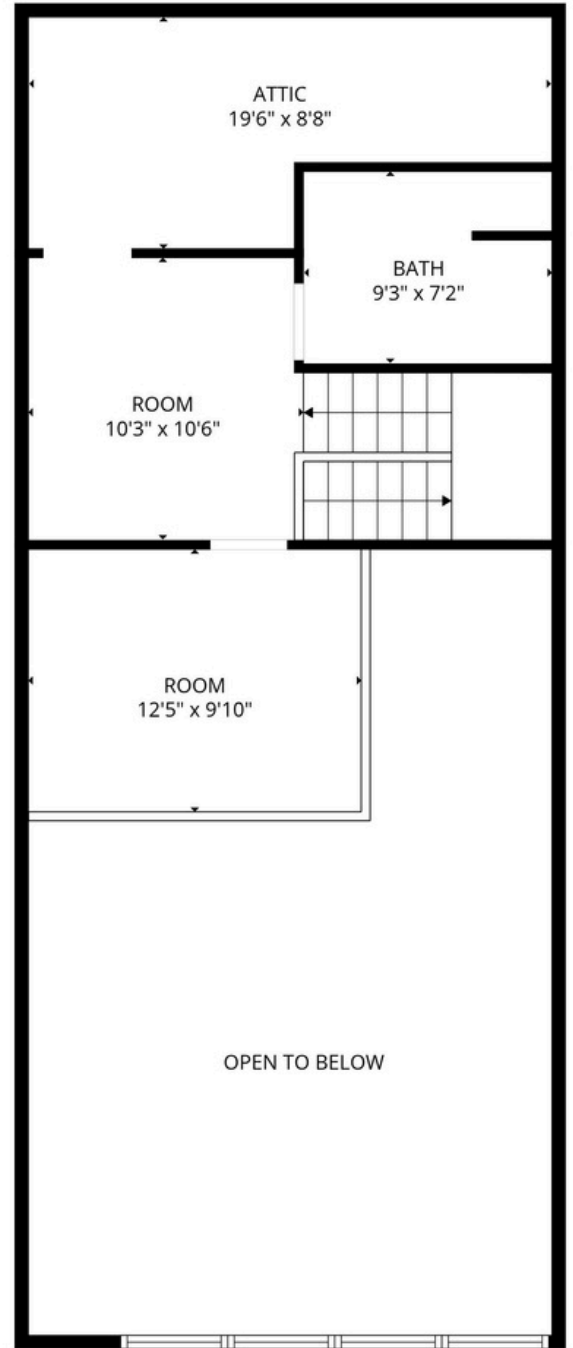


lindsay@woodfordcre.com

FLOOR PLAN | FIRST FLOOR



1st floor



2nd floor

The information contained herein has been obtained from sources we understand to be reliable. Whilst we do not doubt its accuracy it has not been verified & we make no guarantees, warranty or representations about it. Any projections, opinions, assumptions or estimates used are for example only. You & your advisors should conduct a careful independent investigation of the property to determine the property's satisfaction to your needs. © Woodford Commercial Real Estate.

