

FOR LEASE

1106 Douglas St.
Longview, WA 98632

PROPERTY INFORMATION

Rare, move-in ready medical or traditional office spaces available in this prestigious professional building of Longview. These spaces are ideally set up for medical use but could easily be used for an office space.

SUITE F

\$1,550 Per Month + Utilities

Size: 2,045 SF +/- | 2 Floors

Floor 1: 1,500 SF | Floor 2: 545 SF

Suite F is 2,045 SF spread over two floors. The ground floor has 6 offices/exam rooms, a large reception/waiting room, and two restrooms. The upper floor has a full restroom, kitchenette, and breakroom area. Asking \$1,550 per month plus utilities.

SUITE G

\$2,300 Per Month + Utilities

Size: 3,049 SF +/- | 2 Floors

Floor 1: 1,952SF | Floor 2: 1,097SF

Suite G contains 3,049 SF spread over two floors. The ground floor consists of 6 offices/exam rooms, a reception, a restroom, a large storage room, and four built-in cubicles with a working space. The second floor has storage and 5 built-in workstations. Asking \$2,300 per month plus utilities.

CALL TODAY TO SCHEDULE YOUR TOUR.



Chris Roewe | Partner/Broker
C. 360.556.5101
chrisroewe@hotmail.com

Lindsay Johnson | Licensed Assistant
O. 360.501.5500
www.woodfordcre.com

FLOOR PLAN

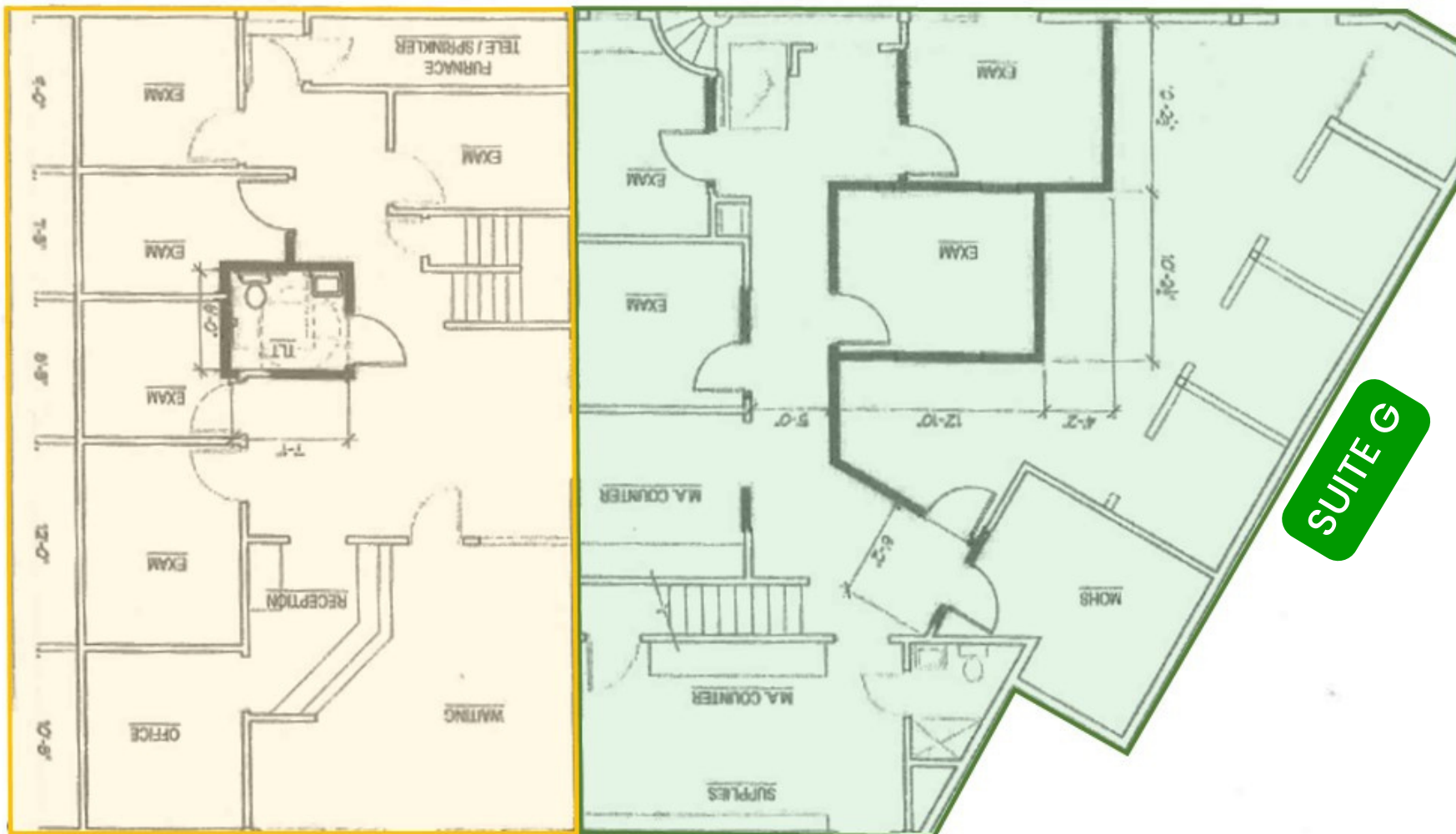
Ground Floor

1106 Douglas St.
Longview, WA 98632

DOUGLAS STREET

SUITE F

SUITE G



PARKING LOT



The information contained herein has been obtained from sources we understand to be reliable. Whilst we do not doubt its accuracy it has not been verified & we make no guarantees, warranty, or representations about it. Any projections, opinions, assumptions or estimates used are for example only. You & your advisors should conduct a careful independent investigation of the property to determine the property's satisfaction to your needs. © Woodford Commercial Real Estate.

PHOTOS

SUITE G

1106 Douglas St.
Longview, WA 98632

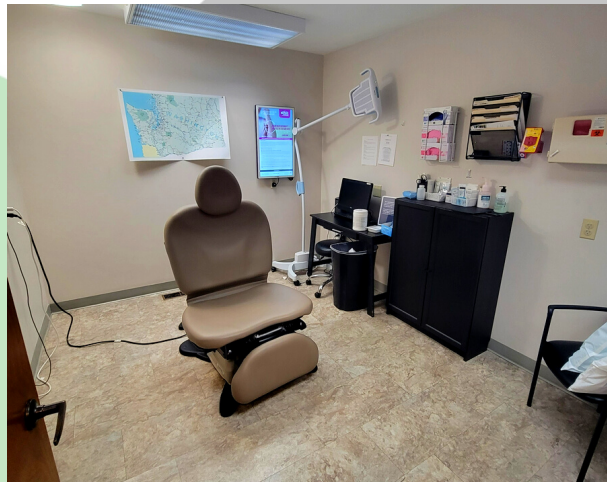


The information contained herein has been obtained from sources we understand to be reliable. Whilst we do not doubt its accuracy it has not been verified & we make no guarantees, warranty, or representations about it. Any projections, opinions, assumptions or estimates used are for example only. You & your advisors should conduct a careful independent investigation of the property to determine the property's satisfaction to your needs. © Woodford Commercial Real Estate.

PHOTOS

SUITE F

1106 Douglas St.
Longview, WA 98632



The information contained herein has been obtained from sources we understand to be reliable. Whilst we do not doubt its accuracy it has not been verified & we make no guarantees, warranty, or representations about it. Any projections, opinions, assumptions or estimates used are for example only. You & your advisors should conduct a careful independent investigation of the property to determine the property's satisfaction to your needs. © Woodford Commercial Real Estate.