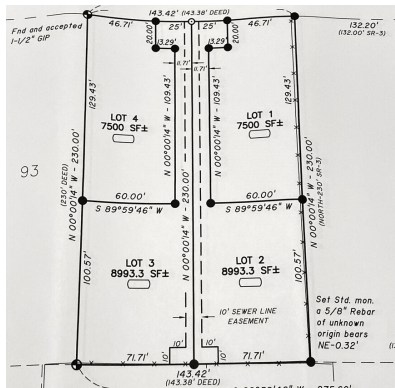


FOR SALE



950 WALNUT ST., KELSO, WA 98626

RETAIL PRICE

\$400,000

LAND SIZE

33,106 SF LOT

4-Plat; Two lots at 7,500SF & two lots at 8993.3SF.

Build as single family, mobile or duplex.

Water: In Street | Sewer: Available

Zoning: Residential

Get in touch

todd@woodfordcre.com | C. 360.601.9700 O. 360.501.5500

