

# FOR LEASE

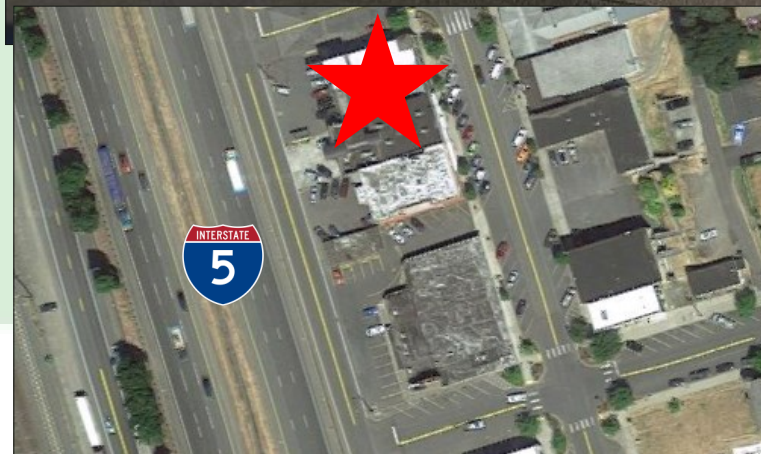
299 N 1st Street  
Kalama, WA 98625

## PROPERTY DEMOGRAPHICS

**Address:** 299 N 1st Street  
**Terms:** \$1,900 Per Month + Utilities  
**Size:** 2,500 SF +/-  
**Tax ID:** 4-0099

## PROPERTY FEATURES

FOR LEASE: Multi-level office in class A building in highly visible and desired downtown Kalama now available. This space features 2,500 SF spread over multiple levels with 6 good sized offices, an open reception/waiting area, two restrooms, large work space that can be converted into a conference room and has multiple entrances. Located adjacent to I5, this building boasts excellent exposure, good signage, plenty of street parking, and is close to all that Kalama has to offer. Asking \$1,900 per month plus utilities. Call today for your private tour.

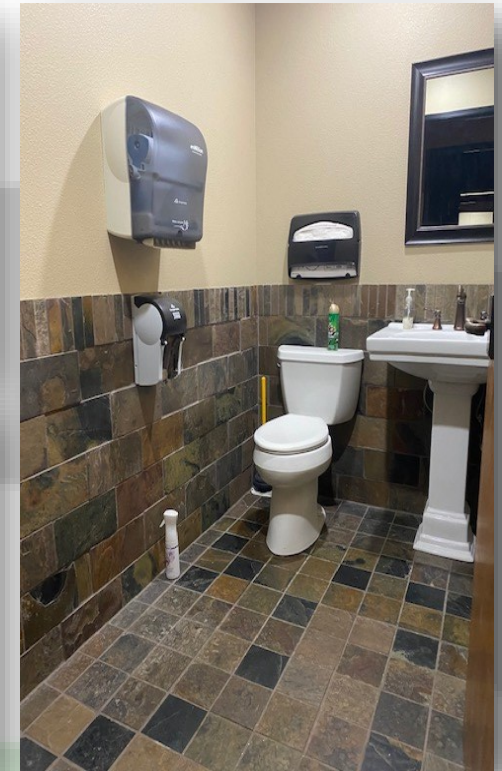


**For Further Information  
Please Contact**  
Chris Roewe  
chrisroewe@hotmail.com  
208 Vine Street  
Kelso, WA 98626  
P 360.501.5500 ■ F 360.501.6051  
www.woodfordcre.com

The information contained herein has been obtained from sources we understand to be reliable. Whilst we do not doubt its accuracy it has not been verified & we make no guarantees, warranty or representations about it. Any projections, opinions, assumptions or estimates used are for example only. You & your advisors should conduct a careful independent investigation of the property to determine the property's satisfaction to your needs.  
© Woodford Commercial Real Estate.

# FOR LEASE

299 N 1st Street  
Kalama, WA 98625



The information contained herein has been obtained from sources we understand to be reliable. Whilst we do not doubt its accuracy it has not been verified & we make no guarantees, warranty or representations about it. Any projections, opinions, assumptions or estimates used are for example only. You & your advisors should conduct a careful independent investigation of the property to determine the property's satisfaction to your needs. © Woodford Commercial Real Estate.