

# RETAIL LEASE LOCATION

1933 BELMONT LOOP  
WOODLAND, WA 98674

RATES  
START AT  
MONTH

**\$ 4,342**  
Plus NNN

SUITE  
SIZES  
START AT

**SF  
+/- 2,171**



## ABOUT THE PROPERTY

Position your business for success with this high-visibility retail/office space just off I-5 Exit 22 in Woodland. Ideal for professional, medical, or retail use, this prime location offers excellent freeway exposure, easy access, ample parking, and great signage opportunities. Two leasing options are available: a 2,171 SF suite with an optimized floor plan that includes 10 private offices, reception, conference room, and more; or utilize the entire 2,958 SF building that includes all the features in option 1 with a an additional 787 SF suite equipped with a private entrance and restroom perfect for a meeting room, classroom or retail showroom. Lease rates start at \$4,342/month plus NNN. Call today to schedule your tour.



## PROPERTY DETAIL

### OPTION 1

2,958 SF | \$5,423/Month + NNN

### OPTION 2

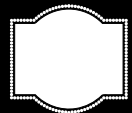
2,171 SF | \$4,342/Month + NNN

### OPTION 3

787 SF | \$1,574/Month + NNN



CLOSE TO  
INTERSTATE 5



SIGNAGE  
AVAILABLE



woodfordcre.com



chris@woodfordcre.com

## GET IN TOUCH

Chris Roewe  
Owner/Broker

Lindsay Johnson  
Licensed Assistant



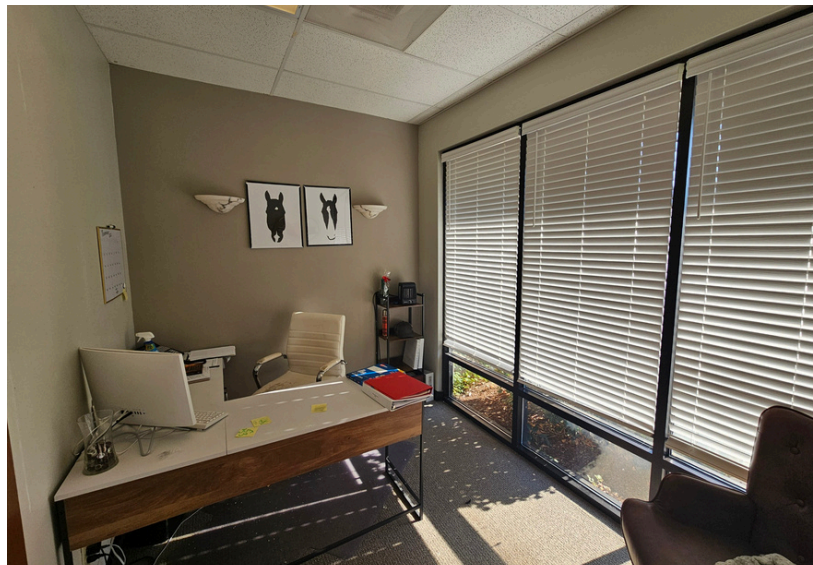
(360) 501-5500



lindsay@woodfordcre.com



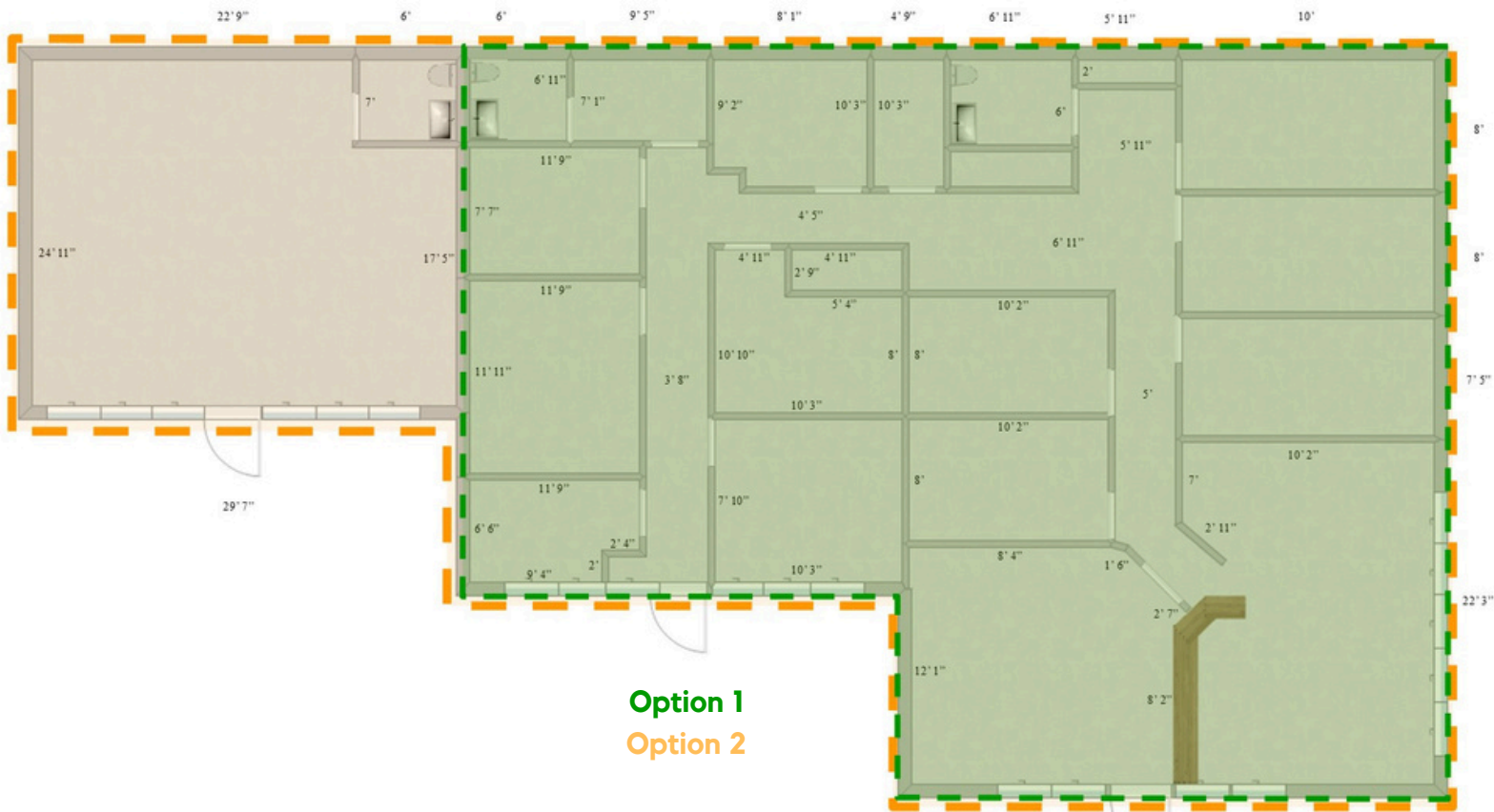
# RETAIL FOR LEASE



The information contained herein has been obtained from sources we understand to be reliable. Whilst we do not doubt its accuracy it has not been verified & we make no guarantees, warranty or representations about it. Any projections, opinions, assumptions or estimates used are for example only. You & your advisors should conduct a careful independent investigation of the property to determine the property's satisfaction to your needs. © Woodford Commercial Real Estate.



# RETAIL FOR LEASE



woodfordcre.com



chris@woodfordcre.com

## GET IN TOUCH

Chris Roewe  
Owner/Broker

Lindsay Johnson  
Licensed Assistant



(360) 501-5500



lindsay@woodfordcre.com