

# RETAIL LEASE LOCATION

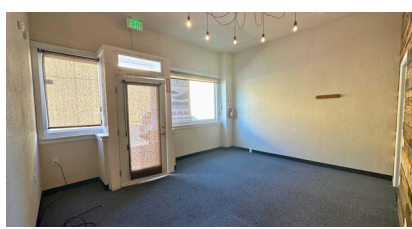
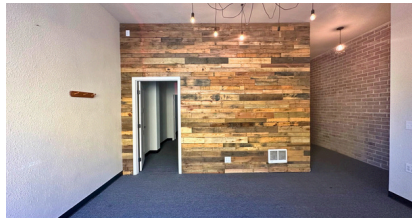
206 VINE ST  
KELSO WA 98626

PER  
MONTH  
+ UTILITIES

\$ **1,000**

BUILDING  
SIZE

SF **800**



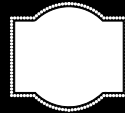
## ABOUT THE PROPERTY

Unique office in downtown Kelso now available for lease. This move in ready office is approximately 800 SF spread over two large offices, a good sized reception/waiting area featuring large windows with natural light and good visibility. This building would make an excellent location for your office or business. Asking for \$1,000 per month plus utilities. Call today for your private tour.

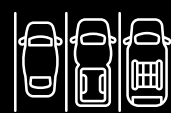
## PROPERTY DETAIL



CLOSE TO  
INTERSTATE 5



EXCELLENT  
SIGNAGE



STREET  
PARKING



PARCEL  
2116401



woodfordcre.com



chris@woodfordcre.com

## GET IN TOUCH

Chris Roewe  
Owner/Broker

Lindsay Johnson  
Licensed Assistant



(360) 501-5500



lindsay@woodfordcre.com



# RETAIL FOR LEASE



The information contained herein has been obtained from sources we understand to be reliable. Whilst we do not doubt its accuracy it has not been verified & we make no guarantees, warranty or representations about it. Any projections, opinions, assumptions or estimates used are for example only. You & your advisors should conduct a careful independent investigation of the property to determine the property's satisfaction to your needs. © Woodford Commercial Real Estate.