

FOR LEASE

1700 Hudson Street Suite 201
Longview, WA 98632

PROPERTY DEMOGRAPHICS

ADDRESS: 1700 Hudson Street

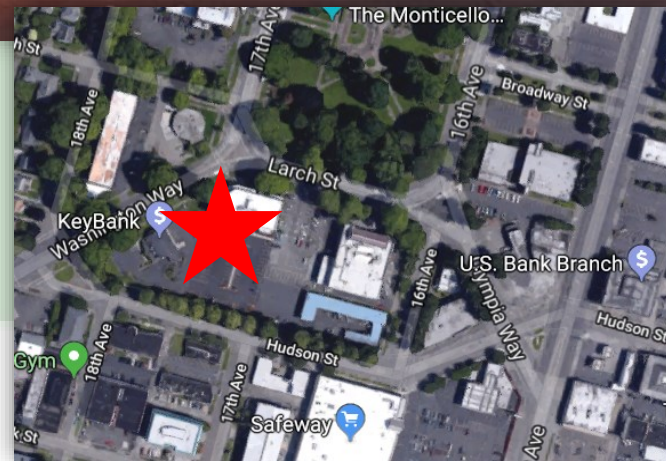
SUITE: 201

TERMS: \$2,082 Per Month + NNN

SIZE: 1,388 SF

PROPERTY FEATURES

FOR LEASE: Class A second-floor office space in the prime Civic Circle location is now available. This space features generously sized move-in ready offices with windows for great natural light, an open concept and comfortable reception area with an open work area, a breakroom with kitchenette, plenty of storage, high ceilings, and much more. The building is elevator served and has a large parking lot, along with great traffic counts and visibility. Call today for your private tour.



**For Further Information
Please Contact**

Chris Roewe
chrisroewe@hotmail.com
208 Vine St
KELSO WA 98626

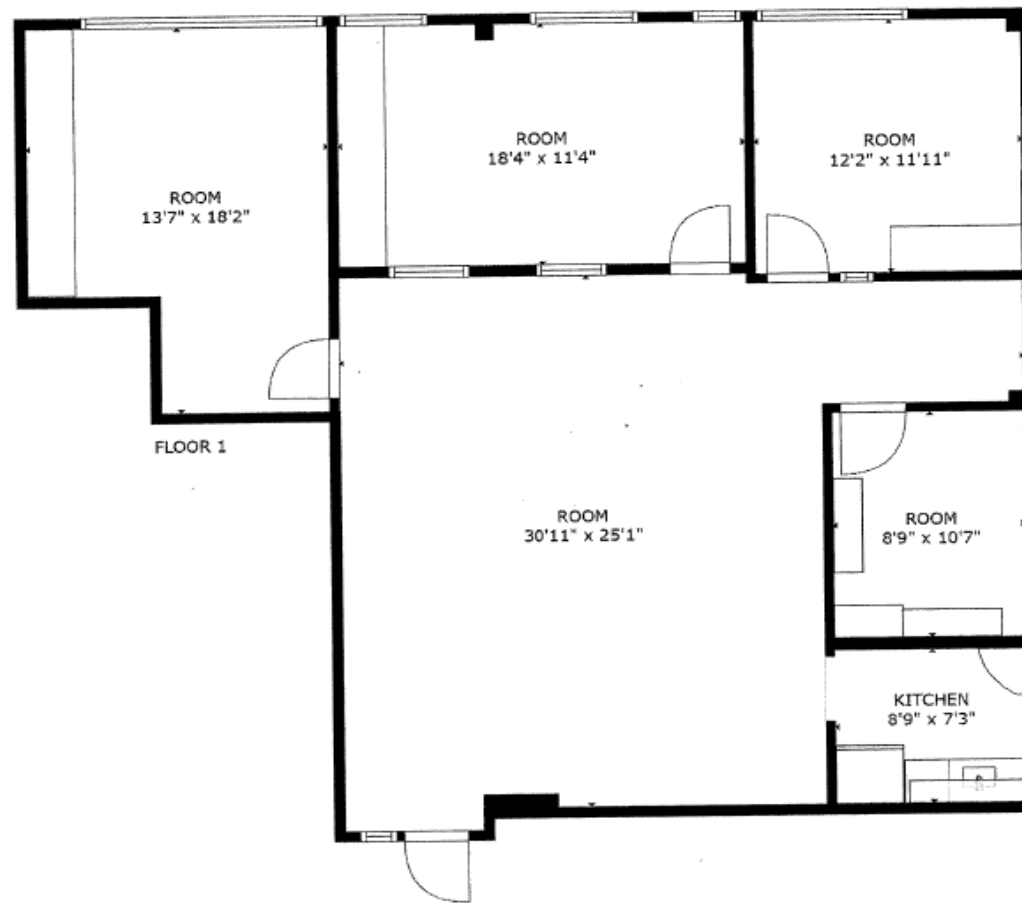
P 360.501.5500 ■ F 360.501.6051
www.woodfordcre.com

The information contained herein has been obtained from sources we understand to be reliable. Whilst we do not doubt its accuracy it has not been verified & we make no guarantees, warranty or representations about it. Any projections, opinions, assumptions or estimates used are for example only. You & your advisors should conduct a careful independent investigation of the property to determine the property's satisfaction to your needs.

© Woodford Commercial Real Estate.

FLOOR PLAN

1700 Hudson Street Suite 201
Longview, WA 98632



Commercial Real Estate
For Further Information

Please Contact

Chris Roewe

chrisroewe@hotmail.com

208 Vine St

KELSO WA 98626

P 360.501.5500 ■ F 360.501.6051

www.woodfordcre.com

The information contained herein has been obtained from sources we understand to be reliable. Whilst we do not doubt its accuracy it has not been verified & we make no guarantees, warranty or representations about it. Any projections, opinions, assumptions or estimates used are for example only. You & your advisors should conduct a careful independent investigation of the property to determine the property's satisfaction to your needs.

© Woodford Commercial Real Estate.

FOR LEASE

1700 Hudson Street Suite 201
Longview, WA 98632



Woodford

Commercial Real Estate

For Further Information

Please Contact

Chris Roewe

chrisroewe@hotmail.com

208 Vine St

KELSO WA 98626

P 360.501.5500 ■ F 360.501.6051

www.woodfordcre.com

The information contained herein has been obtained from sources we understand to be reliable. Whilst we do not doubt its accuracy it has not been verified & we make no guarantees, warranty or representations about it. Any projections, opinions, assumptions or estimates used are for example only. You & your advisors should conduct a careful independent investigation of the property to determine the property's satisfaction to your needs.

© Woodford Commercial Real Estate.