



OFFICES FOR LEASE LOCATION

711 VANDERCOOK WAY
STE 112
LONGVIEW WA 98632

\$ 425-1,200
Includes Utilities + Wi-Fi

PER MONTH

SF VARIES

OFFICE SIZE

ABOUT THE PROPERTY

Single office spaces now available inside the Southwest Washington Esthetics Institute. Shared features include two restrooms, a kitchen/breakroom, conference room and a large reception with waiting area. This location has an ample sized parking area & excellent visibility with over 40,000 VPD at the intersection. Asking lease rate starts at \$425.00 per month with wi-fi and utilities included. Qualified tenants renting all offices can potentially receive reception area. Call today to get more information or to schedule your private tour.



OFFICES AVAILABLE

OFFICE 1 & 2 | \$425/MONTH
OFFICE 3 | \$475/MONTH
RENT ALL 3 | \$1,200/MONTH
WI-FI & UTILITIES INCLUDED

PROPERTY DETAIL



40,000 VPD



82 WALK SCORE



PLENTY OF SHARED PARKING

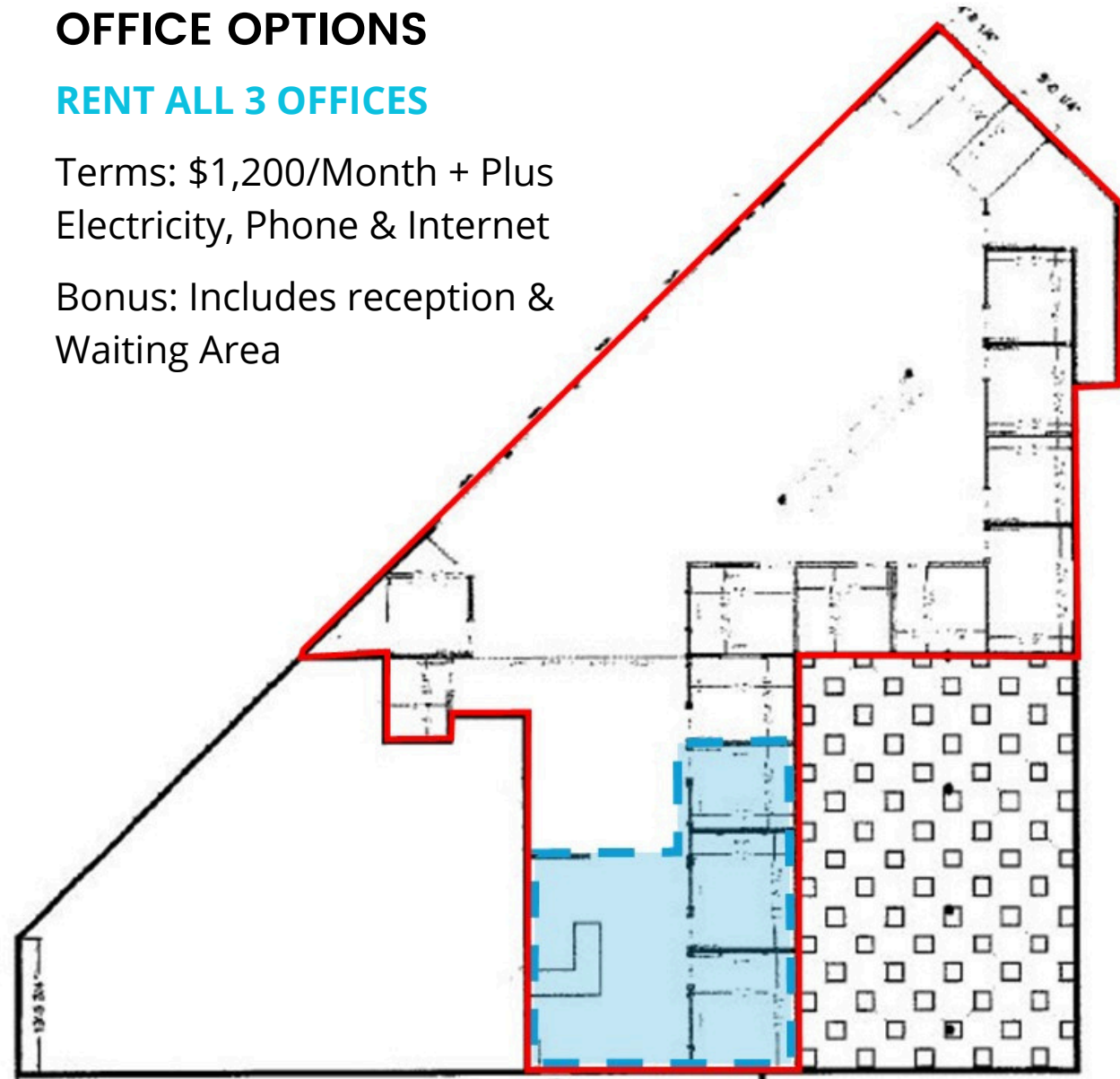


OFFICE OPTIONS

RENT ALL 3 OFFICES

Terms: \$1,200/Month + Plus
Electricity, Phone & Internet

Bonus: Includes reception &
Waiting Area



woodfordcre.com



chrisroewe@hotmail.com

GET IN TOUCH

Chris Roewe
Partner Broker

Lindsay Johnson
Licensed Assistant



(360) 501-5500



(360) 556-5101

OFFICE OPTIONS

OFFICE 1

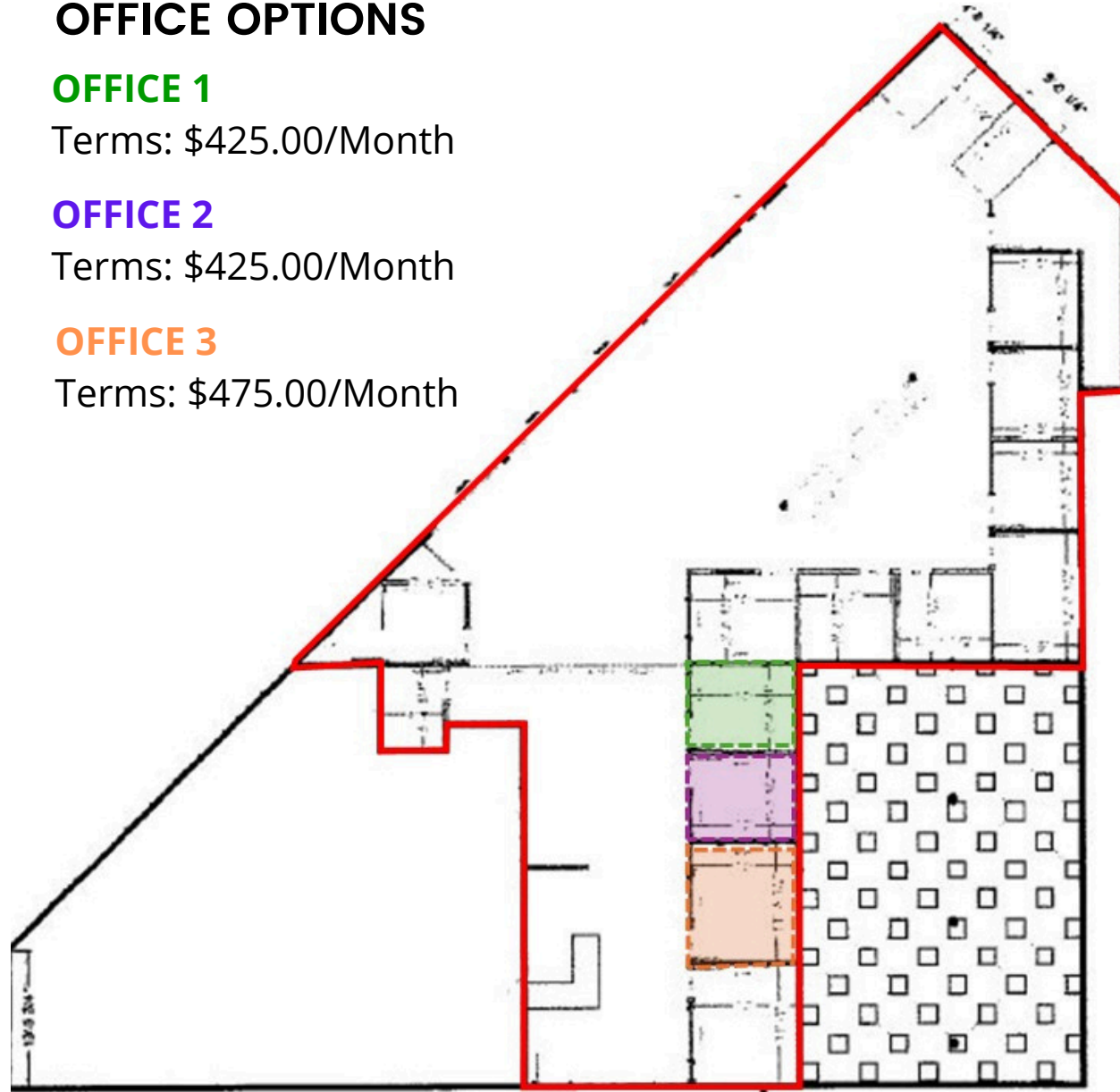
Terms: \$425.00/Month

OFFICE 2

Terms: \$425.00/Month

OFFICE 3

Terms: \$475.00/Month



woodfordcre.com



chrisroewe@hotmail.com

GET IN TOUCH

Chris Roewe
Partner Broker

Lindsay Johnson
Licensed Assistant



(360) 501-5500



(360) 556-5101



woodfordcre.com



chrisroewe@hotmail.com

GET IN TOUCH

Chris Roewe
Partner Broker

Lindsay Johnson
Licensed Assistant



(360) 501-5500



(360) 556-5101



woodfordcre.com



chrisroewe@hotmail.com

GET IN TOUCH

Chris Roewe
Partner Broker

Lindsay Johnson
Licensed Assistant



(360) 501-5500



(360) 556-5101