

Exclusively Offering



\$500,000

910 16th Avenue—Longview, WA 98632

Chris Roewe—Partner/Broker
Todd Wade — Partner/Broker
360.556.5101 cell
360.501-5500 office
208 Vine St., Kelso, WA 98626
chrisroewe@hotmail.com



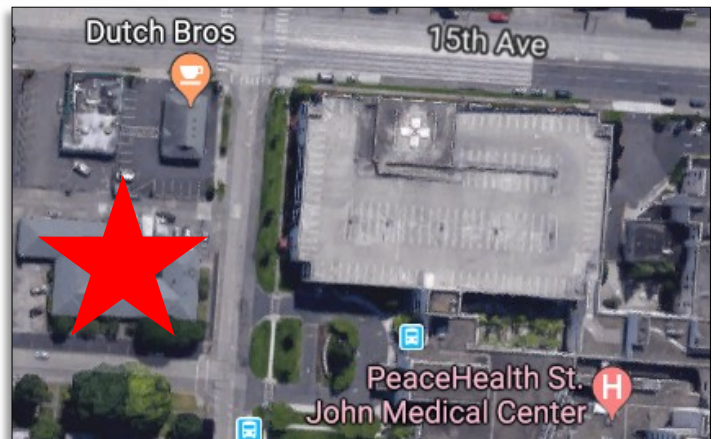
Real Estate Investments and Exchanges Specialist

Overview and Aerial



Property Demographics:

PRICE:	\$500,000
BUILDING SF:	10,981 SF +/-
LOT SF:	24,000 SF +/-
TAX PARCEL:	09436

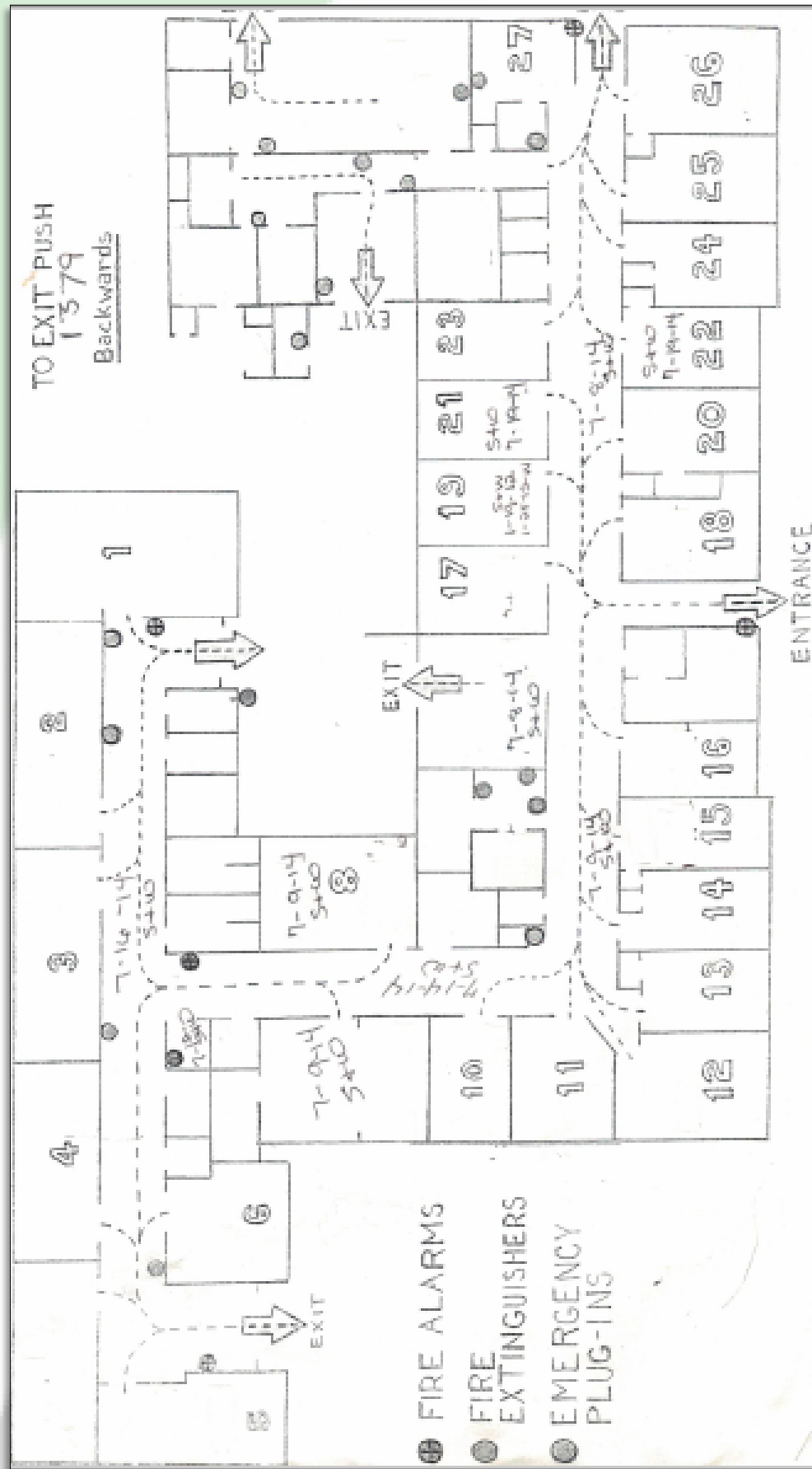


Property Features:

Location, Location, Location! This property is ideally located directly across from PeaceHealth St. John Medical Center's main entrance. This building was once a rehabilitation center spread over 10,981 SF and sits on approx. 24,000 SF of land. Take advantage of the current layout and design for an excellent medical facility or this would be a good candidate for a multifamily conversion with a goal of 10+ units depending on the design. Call today for your private tour.



Floor Plan



Photos



DISCLAIMER

The information in this package has been obtained from sources believed reliable. Whilst we do not doubt its accuracy we have not verified it & we make no guarantee, warranty or representation about it.

It is your responsibility to independently confirm its accuracy & completeness. Any projections, opinions, assumptions or estimates used are for example only & do not represent the current or future performance of the property.

The value of this transaction to you depends on tax & other factors which should be evaluated by your tax, financial & legal advisors.

You & your advisors should conduct a careful, independent investigation of the property to determine to your satisfaction the suitability of the property for your needs.