

FOR LEASE

1104 14th Avenue , Ste. 120
Longview, WA 98632

PROPERTY DEMOGRAPHICS

ADDRESS: 1104 14th Avenue, Ste. 120

PRICE: \$970 Per Month + NNN

SIZE: 969 SF +/-

TAX ID: 3020605

PROPERTY FEATURES

FOR LEASE: Move in ready office coming soon. This office space features three good-sized offices with large windows allowing for plenty of natural light, an open reception and waiting area, common restrooms and kitchen, reserved parking for employees and guests, and much more. This office is approx. 969 SF with common area allocation and is asking \$970 per month plus triple net charges. Call today for your private tour.



Commercial Real Estate

For Further Information

Please Contact

Chris Roewe– Broker/ Owner
chrisroewe@hotmail.com

208 Vine St

KELSO WA 98626

P 360.501.5500 ■ F

360.501.6051

www.woodfordcre.com

The information contained herein has been obtained from sources we understand to be reliable. Whilst we do not doubt its accuracy it has not been verified & we make no guarantees, warranty or representations about it. Any projections, opinions, assumptions or estimates used are for example only. You & your advisors should conduct a careful independent investigation of the property to determine the property's satisfaction to your needs.

© Woodford Commercial Real Estate.

FOR LEASE

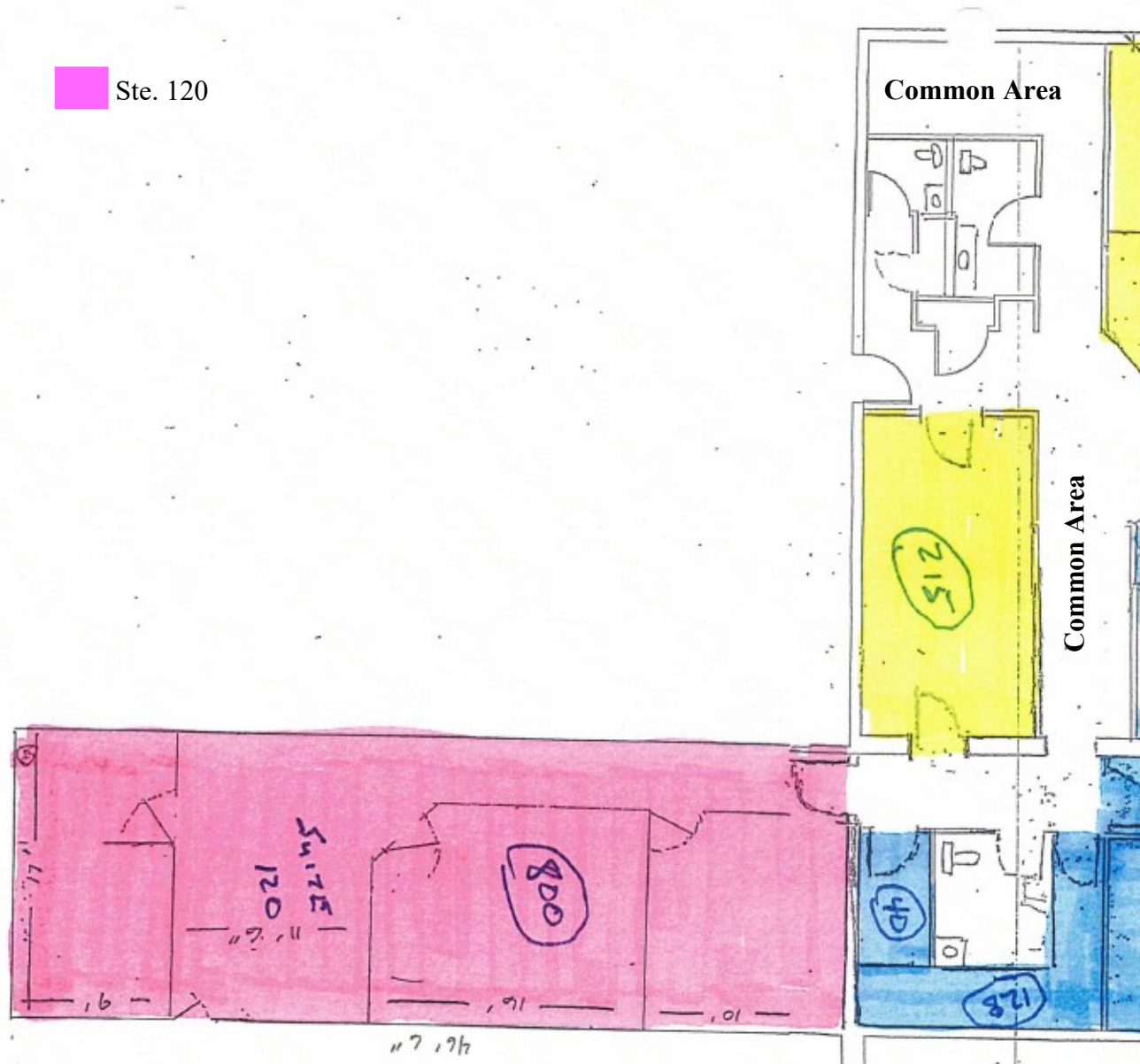
1104 14th Avenue , Ste. 120
Longview, WA 98632



The information contained herein has been obtained from sources we understand to be reliable. Whilst we do not doubt its accuracy it has not been verified & we make no guarantees, warranty or representations about it. Any projections, opinions, assumptions or estimates used are for example only. You & your advisors should conduct a careful independent investigation of the property to determine the property's satisfaction to your needs.
© Woodford Commercial Real Estate.

FOR LEASE

1104 14th Avenue , Ste. 120
Longview, WA 98632



**For Further Information
Please Contact**
Chris Roewe- Broker/ Owner
chrisroewe@hotmail.com
208 Vine St
KELSO WA 98626
P 360.501.5500 ■ F 360.501.6051
www.woodfordcre.com

The information contained herein has been obtained from sources we understand to be reliable. Whilst we do not doubt its accuracy it has not been verified & we make no guarantees, warranty or representations about it. Any projections, opinions, assumptions or estimates used are for example only. You & your advisors should conduct a careful independent investigation of the property to determine the property's satisfaction to your needs.
© Woodford Commercial Real Estate.