

# FOR LEASE

100 Minor Road Ste. 102  
Kelso, WA 98626

## PROPERTY INFORMATION

Terms: \$24 Per SF Annum + NNN

Size: 1,500 SF +/-

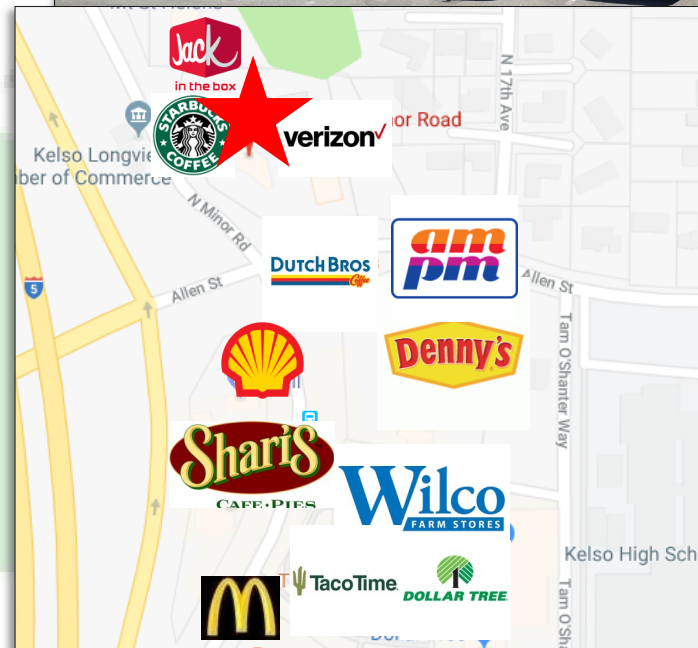
Tax ID: 239250200

Traffic: 78,000 VPD +

*\*Available July 1st, 2022\**

## PROPERTY FEATURES

LOCATION, LOCATION, LOCATION at this 1,500 SF suite right off I-5 at Exit 39 in Kelso. With approximately 78,000 cars per day along I-5. This space boasts excellent visibility, great natural light with large storefront glass, and spectacular signage opportunity. Adjoining businesses on the same site include Starbucks, Jack in the Box, Verizon, and a new car wash. Asking \$3,000 per month plus Triple Net charges. Call today for additional information or to schedule your private tour.



# Woodford

Commercial Real Estate  
For Further Information

Please Contact

Chris Roewe -Broker

chrisroewe@hotmail.com

360.501.5500

208 Vine St

KELSO WA 98626

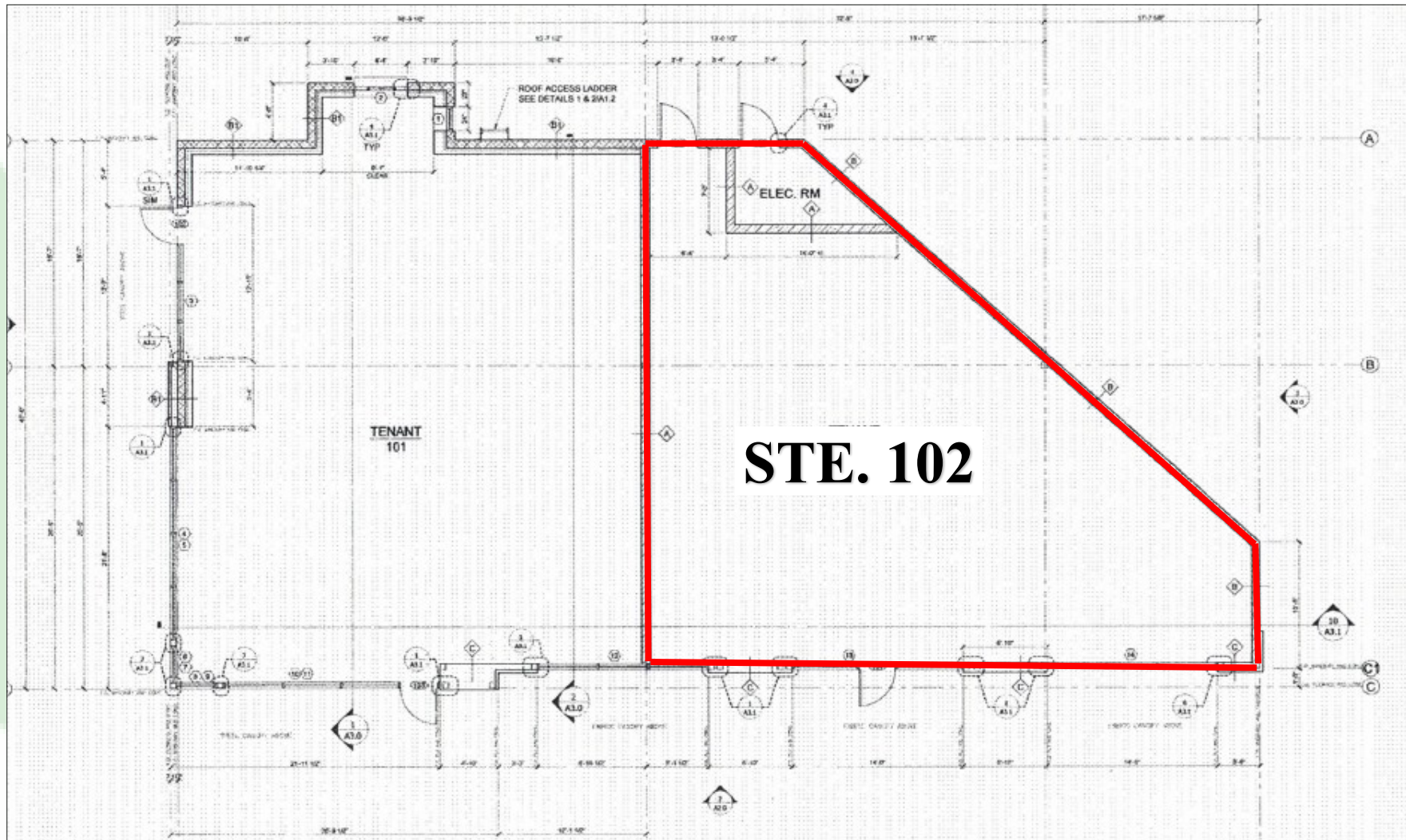
360.501.6051

www.woodfordcre.com

The information contained herein has been obtained from sources we understand to be reliable. Whilst we do not doubt its accuracy it has not been verified & we make no guarantees, warranty or representations about it. Any projections, opinions, assumptions or estimates used are for example only. You & your advisors should conduct a careful independent investigation of the property to determine the property's satisfaction to your needs. © Woodford CRE.

# FOR LEASE

100 Minor Road Ste. 102  
Kelso, WA 98626



The information contained herein has been obtained from sources we understand to be reliable. Whilst we do not doubt its accuracy it has not been verified & we make no guarantees, warranty or representations about it. Any projections, opinions, assumptions or estimates used are for example only. You & your advisors should conduct a careful independent investigation of the property to determine the property's satisfaction to your needs. © Woodford CRE.



# FOR LEASE

100 Minor Road Ste. 102  
Kelso, WA 98626



**For Further Information  
Please Contact  
Chris Roewe -Broker  
[chrisroewe@hotmail.com](mailto:chrisroewe@hotmail.com)  
360.501.5500  
208 Vine Street  
Kelso, WA 98626  
360.501.6051  
[www.woodfordcre.com](http://www.woodfordcre.com)**

The information contained herein has been obtained from sources we understand to be reliable. Whilst we do not doubt its accuracy it has not been verified & we make no guarantees, warranty or representations about it. Any projections, opinions, assumptions or estimates used are for example only. You & your advisors should conduct a careful independent investigation of the property to determine the property's satisfaction to your needs. © Woodford CRE.