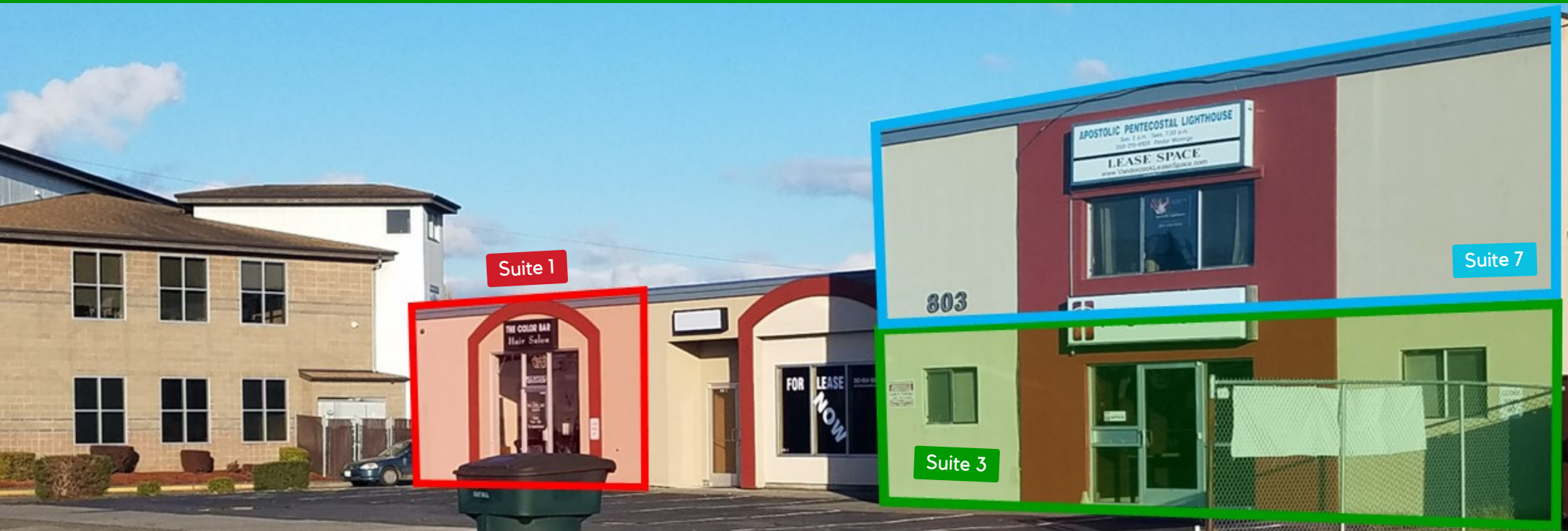


FOR LEASE

803 Vandercook Way
Longview, WA 98632



PROPERTY INFORMATION

Suites available in this highly desired office complex, that's close to all the local amenities. Tenants pay for internet if needed. The property boasts excellent visibility, plenty of parking, and a good mix of co-tenants. Signage opportunities available. Call today to schedule your private tour.

Suite 1 | 1,565 SF | Ground Floor | \$1,600/Month + Utilities

Features a mostly an open space, with high ceilings, lots of natural light and much more. This space was formerly used as a hair salon and an open office.

Suite 3 | Size: 750 SF +/- | Ground Floor | \$1,000/Month (Utilities Included)

Features three sizable offices, a reception area, and open work bullpen area. This suite has direct access to parking lot.

Suite 7 | 750 SF | Second Floor | \$800/Month (Utilities Included)

Features a large open work area, one private office, and storage/IT room. Street side suite features large windows with a lots of natural light.

Suites 8 & 9 | 1,100 SF | Second Floor | \$900/Month (Utilities Included)

Features three sizeable offices with excellent natural light, a spacious reception area, and a private restroom. Potential option to separate these suites.



Chris Roewe | Partner/Broker
C. 360.556.5101
chrisroewe@hotmail.com

Lindsay Johnson | Licensed Assistant
O. 360.501.5500
www.woodfordcre.com

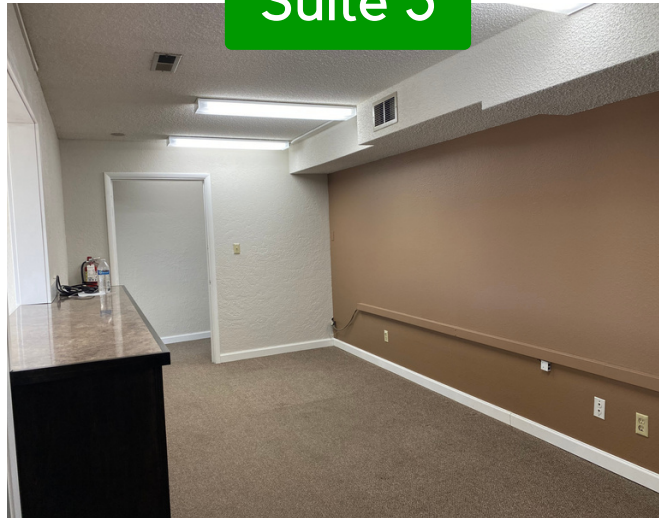
PHOTOS

803 Vandercook Way
Longview, WA 98632

Suite 1



Suite 3



The information contained herein has been obtained from sources we understand to be reliable. Whilst we do not doubt its accuracy it has not been verified & we make no guarantees, warranty, or representations about it. Any projections, opinions, assumptions or estimates used are for example only. You & your advisors should conduct a careful independent investigation of the property to determine the property's satisfaction to your needs. © Woodford Commercial Real Estate.

PHOTOS

803 Vandercook Way
Longview, WA 98632

Suite 7



Suite 8 & 9

