

# FOR LEASE

1935 Belmont Loop, Ste D  
Woodland, WA 98674

## PROPERTY INFORMATION

**LEASE RATES:** \$2,083/Month + NNN

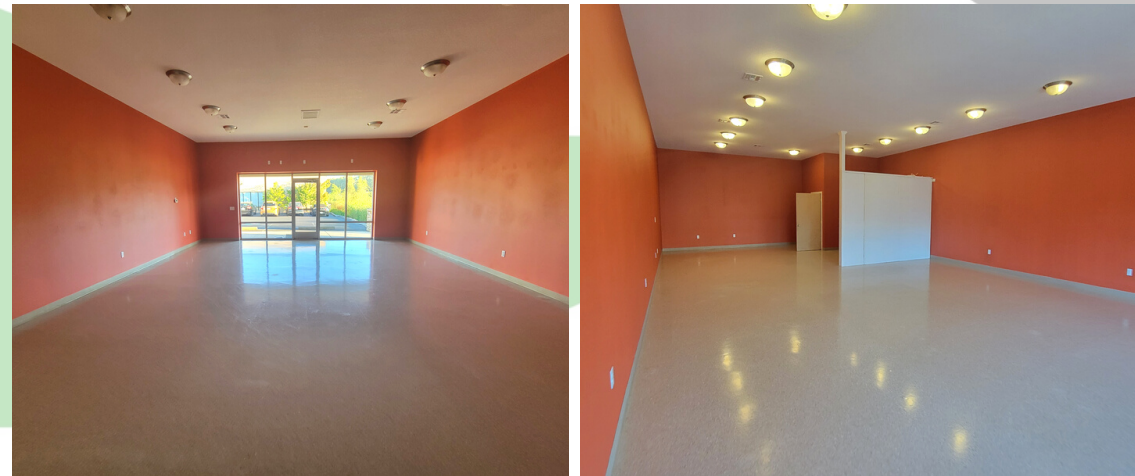
**SUITE SF:** 1,250 SF +/-

**ZONING:** C2 - Highway Commercial  
City of Woodland

**TRAFFIC:** 75,000 + VPD (I-5)

## PROPERTY FEATURES

FOR LEASE: Prime endcap suite, directly adjacent to I-5 freeway off exit 22 in the booming market of Woodland, Washington. This space features 1,250 SF with large storefront glass for lots of natural light, includes great signage opportunities, and ample parking. The suite is an open concept design set for retailers or could be easily converted to an office. The asking lease rate is \$2,083 per month plus triple nets. Call today to see a tour of this rare end cap.



**Chris Roewe—Partner/Broker**  
C. 360.556.5101  
chrisroewe@hotmail.com

www.woodfordcre.com  
Ofc. 360.501.5500  
208 Vine Street, Kelso, WA 98626



# AERIAL

1610 15th Avenue  
Woodland, WA 98674



**DISCLAIMER**  
The information in this package has been obtained from sources believed reliable. Whilst we do not doubt its accuracy we have not verified it & we make no guarantee, warranty or representation about it. It is your responsibility to independently confirm its accuracy & completeness. Any projections, opinions, assumptions or estimates used are for example only & do not represent the current or future performance of the property. The value of this transaction to you depends on tax & other factors which should be evaluated by your tax, financial & legal advisors. You & your advisors should conduct a careful, independent investigation of the property to determine to your satisfaction the suitability of the property for your needs.

