

FOR LEASE

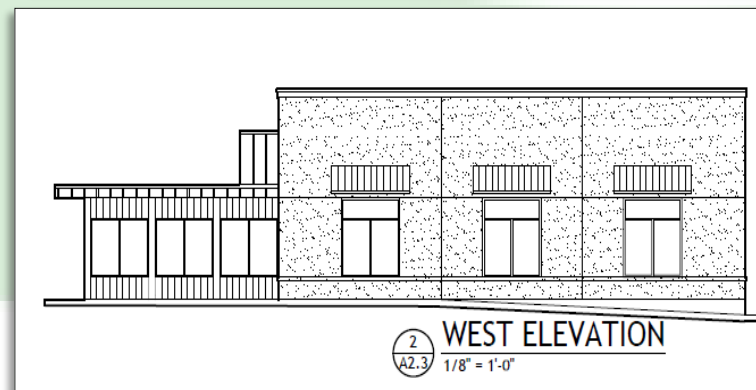
1975 Belmont Loop
Woodland, WA 98674

PROPERTY DEMOGRAPHICS

ADDRESS: 1975 Belmont Loop, Ste. TBD
PRICE: \$30 Per SF Annum + NNN
AVAILABLE SF: 1,200—3,000 SF
TRAFFIC: 75,000 + VPD (I-5)
ZONED: C2 - Highway Commercial
City of Woodland

PROPERTY FEATURES

Location! Location! Location! New construction retail opportunity now available at Exit 22 along I-5, located on the high exposure directly off of the freeway. This property is also in close proximity to Woodland's newer Wal-Mart and the new high school, along with many other new retailers. 1,200 SF—3,000 SF retail suites are available asking \$30 per SF Annum plus Triple Nets. Bring your concept to life with the potential for customizations. Call today for more information and discuss possible options.



Woodford

Commercial Real Estate

For Further Information

Please Contact

CHRIS ROEWE | Broker
chrisroewe@hotmail.com

208 Vine Street
Kelso, WA 98626

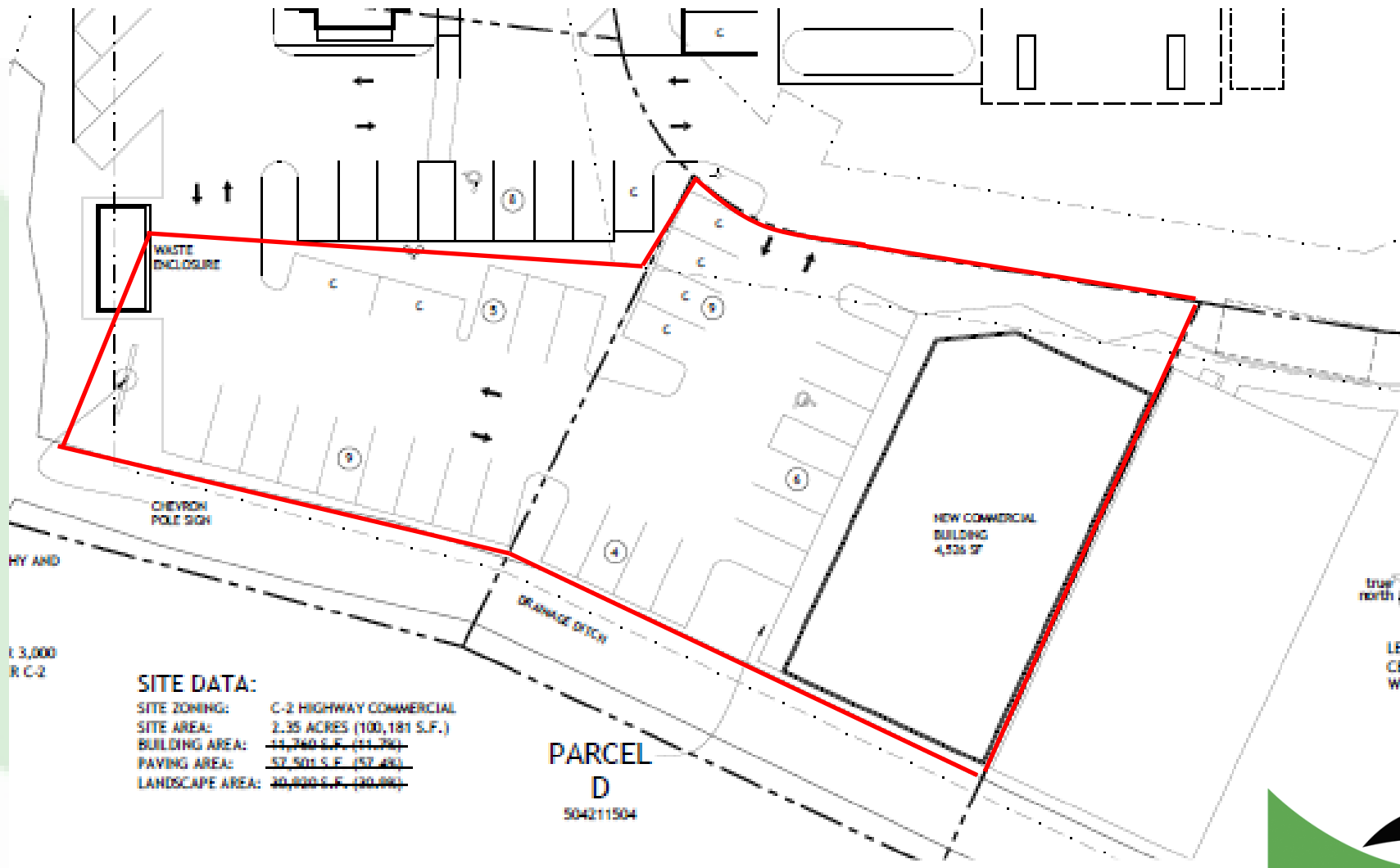
P 360.501.5500 ■ F 360.501.6051
www.woodfordcre.com

The information contained herein has been obtained from sources we understand to be reliable. Whilst we do not doubt its accuracy it has not been verified & we make no guarantees, warranty or representations about it. Any projections, opinions, assumptions or estimates used are for example only. You & your advisors should conduct a careful independent investigation of the property to determine the property's satisfaction to your needs.

© Woodford Commercial Real Estate.

SITE PLAN

1975 Belmont Loop
Woodland, WA 98674



SITE DATA:

SITE ZONING: C-2 HIGHWAY COMMERCIAL
SITE AREA: 2.35 ACRES (100,181 S.F.)
BUILDING AREA: ~~11,740 S.F. (11,740)~~
PAVING AREA: ~~57,501 S.F. (57,490)~~
LANDSCAPE AREA: ~~30,930 S.F. (30,930)~~

PARCEL
D
504211504

