

FOR LEASE

1430 16th Ave
Longview, WA 98632



PROPERTY FEATURES

Highly visible, freshly updated office suite(s) now available on the highly desired Civic Circle. Starting at approx. 420 SF, 650 SF & up to 1,472 SF that can be designed to fit your business needs. In total all suites have up to seven offices, two restrooms, two kitchens, a breakroom, a good-sized reception and waiting area, and much more. These spaces are move-in ready, have a wide variety of uses allowed and has reserved private parking in rear of the building. Asking lease rates start at \$700 per month plus utilities and will vary depending on size leased. Call today to schedule your tour and your future office. Tax ID: 01676

FULL SUITE

Size: 1,472 SF +/-

Terms: \$1,800/Month (*Plus Utilities*)

MEDIUM SUITE

Size: 650 SF +/-

Terms: \$900/Month (*Plus Utilities*)

SMALL SUITE

Size: 420 SF +/-

Terms: \$700/Month (*Plus Utilities*)



Chris Roewe | Partner/Broker
C. 360.556.5101
chrisroewe@hotmail.com

Lindsay Johnson | Licensed Assistant
O. 360.501.5500
www.woodfordcre.com

PHOTOS

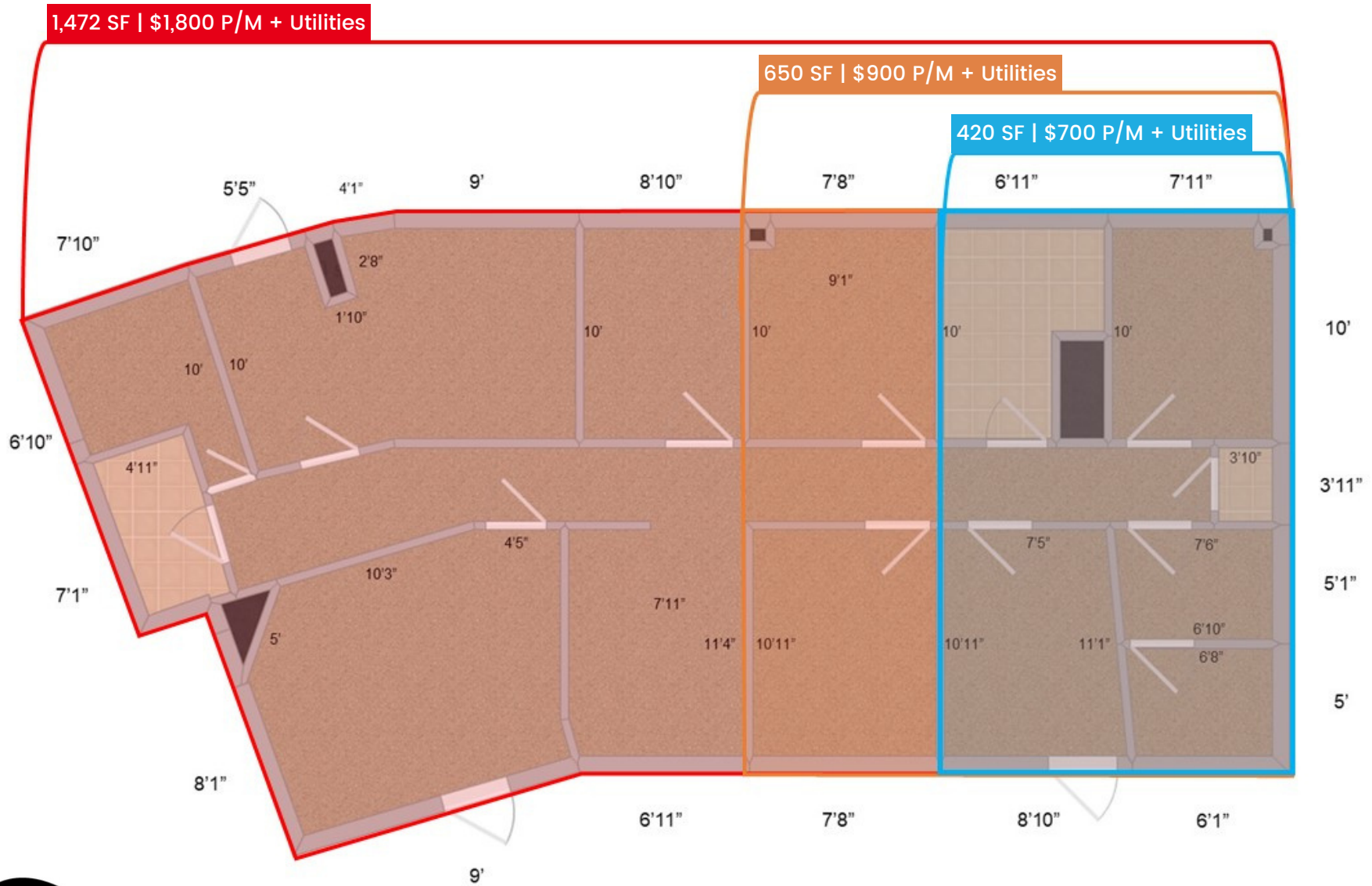
1430 16th Ave
Longview, WA 98632



The information contained herein has been obtained from sources we understand to be reliable. Whilst we do not doubt its accuracy it has not been verified & we make no guarantees, warranty, or representations about it. Any projections, opinions, assumptions or estimates used are for example only. You & your advisors should conduct a careful independent investigation of the property to determine the property's satisfaction to your needs. © Woodford Commercial Real Estate.

FLOOR PLAN

1430 16th Ave
Longview, WA 98632



The information contained herein has been obtained from sources we understand to be reliable. Whilst we do not doubt its accuracy it has not been verified & we make no guarantees, warranty, or representations about it. Any projections, opinions, assumptions or estimates used are for example only. You & your advisors should conduct a careful independent investigation of the property to determine the property's satisfaction to your needs. © Woodford Commercial Real Estate.