

# FOR LEASE

1035 Vandercook Way  
Longview, WA 98632

## PROPERTY DEMOGRAPHICS

**ADDRESS:** 1035 Vandercook Way Suite C

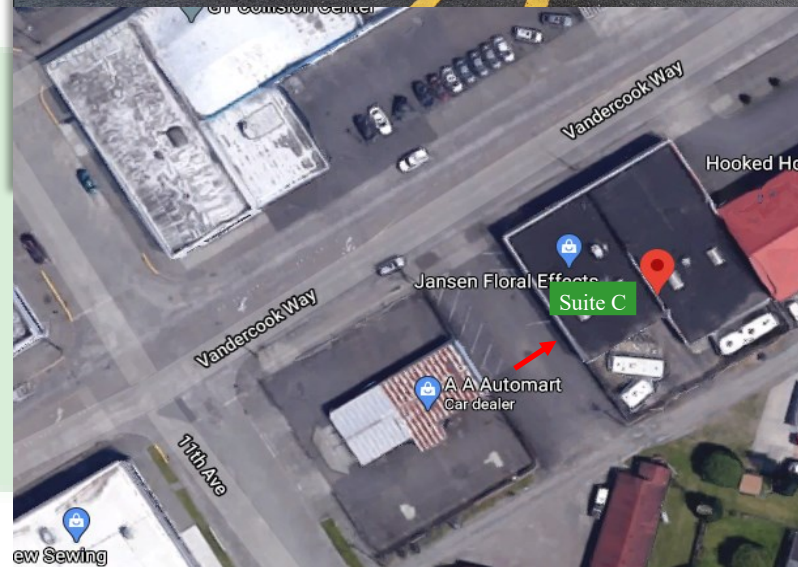
**TERMS:** \$1,900 Per Month + NNN

**TAX ID:** 01850 & 01851

**SIZE:** 3,800 SF +/-

## PROPERTY FEATURES

FOR LEASE: Centrally located showroom and warehouse space with outside storage is now available. This space is 3,800 SF with a good sized showroom and large/open warehouse with tall ceilings. The warehouse has two grade garage doors that face the private fully fenced storage yard and has a spacious private parking lot. Asking for \$1,900 per month plus Triple Nets. Many uses allowed within this zoning. Call today for more information or to set up your private tour.



**For Further Information  
Please Contact**

Chris Roewe – Partner/Broker  
chrisroewe@hotmail.com

208 Vine Street

KELSO WA 98626

P 360.501.5500 ■ F 360.501.6051

www.woodfordcre.com

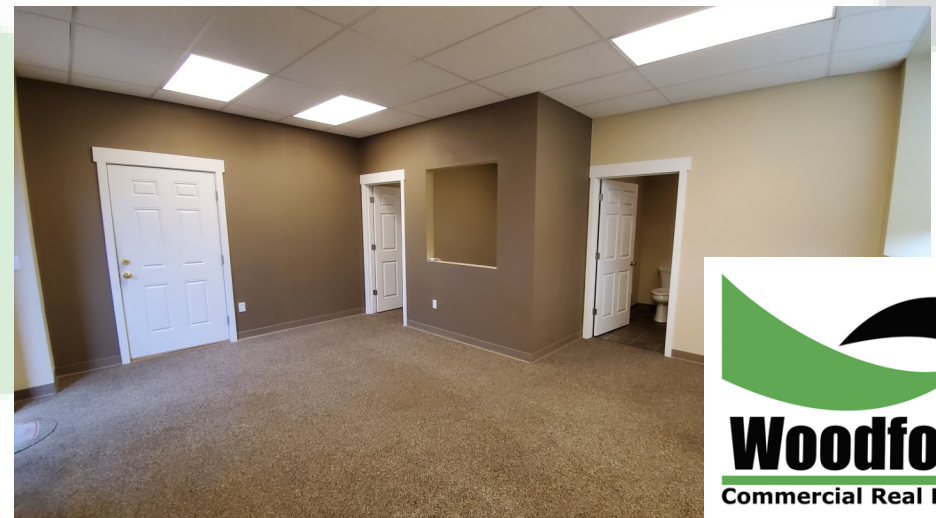
The information contained herein has been obtained from sources we understand to be reliable. Whilst we do not doubt its accuracy it has not been verified & we make no guarantees, warranty or representations about it. Any projections, opinions, assumptions or estimates used are for example only. You & your advisors should conduct a careful independent investigation of the property to determine the property's satisfaction to your needs.

© Woodford Commercial Real Estate.



# FOR LEASE

1035 Vandercook Way  
Longview, WA 98632



The information contained herein has been obtained from sources we understand to be reliable. Whilst we do not doubt its accuracy it has not been verified & we make no guarantees, warranty or representations about it. Any projections, opinions, assumptions or estimates used are for example only. You & your advisors should conduct a careful independent investigation of the property to determine the property's satisfaction to your needs.  
© Woodford Commercial Real Estate.

**For Further Information  
Please Contact**  
Chris Roewe – Partner/ Broker  
chrisroewe@hotmail.com  
208 Vine St  
KELSO WA 98626  
P 360.501.5500 ■ F 360.501.6051  
www.woodfordcre.com