

FOR LEASE

1015 Vandercook Way, Suite A
Longview, WA 98632

PROPERTY DEMOGRAPHICS

ADDRESS: 1015 Vandercook Way, Suite A

TERMS: \$2,200 Per Month + NNN

SIZE: 2,200 SF +/-

TAX ID: 01852

PROPERTY FEATURES

FOR LEASE: Quality large corner office/retail space now available in highly visible center. This former hair salon is approx. 2,200 SF of wide open space with good signage, large windows, and plenty of parking. Asking \$2,200 per month plus triple net charges. Come with your vision for an ideal layout, as build to suit is available for qualified tenants. Sizes of potential suites can be modified. Multiple uses allowed within the zoning. Call today for your private tour.



**For Further Information
Please Contact**
Chris Roewe
chrisroewe@hotmail.com

208 Vine St
KELSO WA 98626

P 360.501.5500 ■ F 360.501.6051
www.woodfordcre.com

The information contained herein has been obtained from sources we understand to be reliable. Whilst we do not doubt its accuracy it has not been verified & we make no guarantees, warranty or representations about it. Any projections, opinions, assumptions or estimates used are for example only. You & your advisors should conduct a careful independent investigation of the property to determine the property's satisfaction to your needs.

© Woodford Commercial Real Estate.

FOR LEASE

1015 Vandercook Way, Suite A
Longview, WA 98632



Woodford

Commercial Real Estate

For Further Information
Please Contact

Chris Roewe
chrisroewe@hotmail.com

208 Vine St
KELSO WA 98626

P 360.501.5500 ■ F 360.501.6051

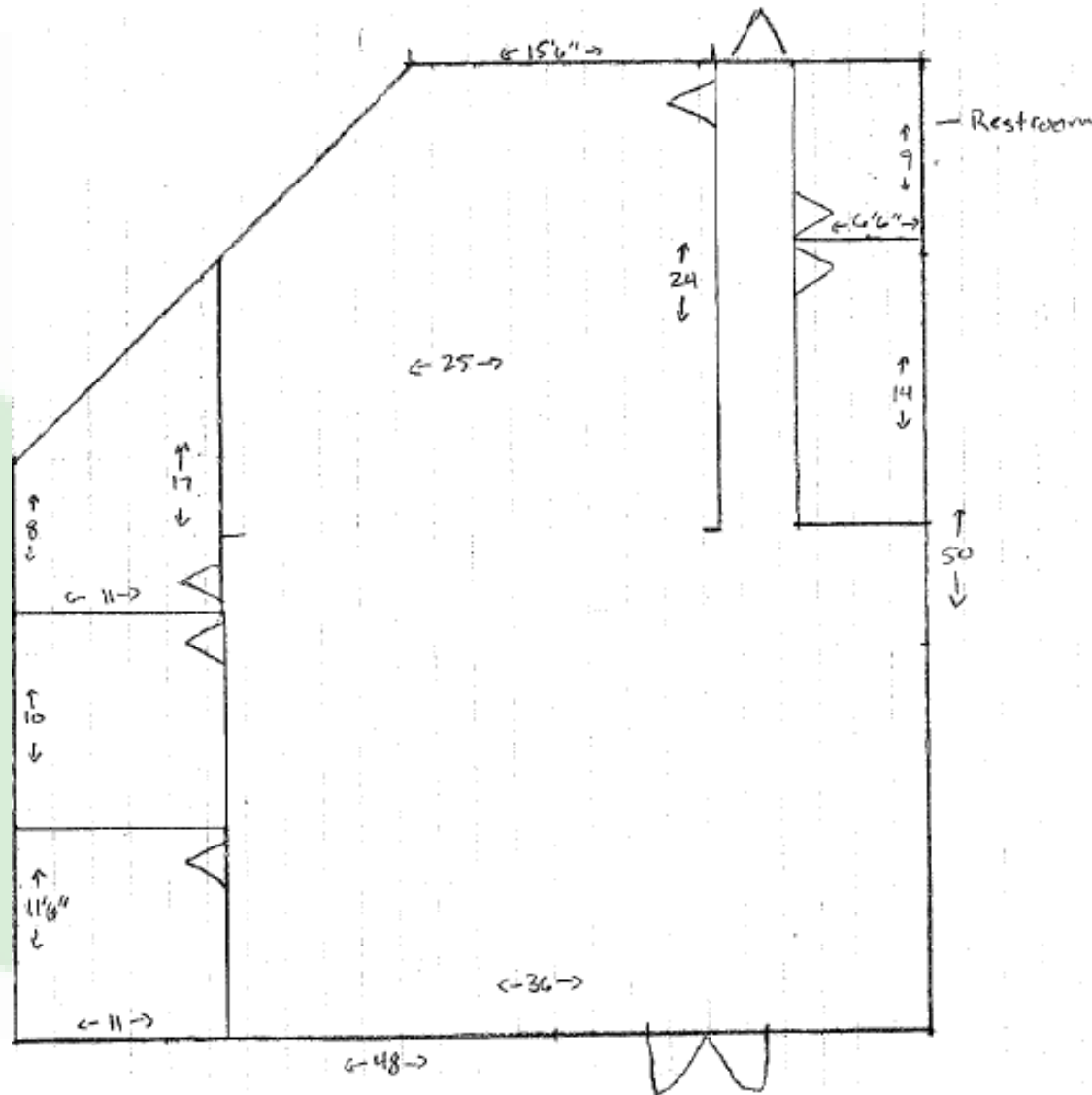
www.woodfordcre.com

The information contained herein has been obtained from sources we understand to be reliable. Whilst we do not doubt its accuracy it has not been verified & we make no guarantees, warranty or representations about it. Any projections, opinions, assumptions or estimates used are for example only. You & your advisors should conduct a careful independent investigation of the property to determine the property's satisfaction to your needs.

© Woodford Commercial Real Estate.

FOR LEASE

1015 Vandercook Way, Suite A
Longview, WA 98632



Woodford
Commercial Real Estate

For Further Information
Please Contact

Chris Roewe
chrisroewe@hotmail.com

208 Vine St
KELSO WA 98626

P 360.501.5500 ■ F 360.501.6051

www.woodfordcre.com

The information contained herein has been obtained from sources we understand to be reliable. Whilst we do not doubt its accuracy it has not been verified & we make no guarantees, warranty or representations about it. Any projections, opinions, assumptions or estimates used are for example only. You & your advisors should conduct a careful independent investigation of the property to determine the property's satisfaction to your needs.

© Woodford Commercial Real Estate.