

FOR LEASE

950 12th Avenue —
Longview

PROPERTY INFORMATION

SUITE: 100

TERMS: \$1,700 Per Month + Utilities

SIZE: 1,700 SF +/-

INVESTMENT HIGHLIGHT!

For Lease: Ground floor office suite now available in this high-class professional building. Suites features 1,700 SF. This suite features multiple good-sized offices, large reception/waiting area, conference room, plenty of storage, small kitchenette, and private restrooms. This building boasts well-kept common areas, great exposure, excellent natural light, private employee parking in the rear and client parking in the front. This first-floor suites range is asking \$1,700 per month plus utilities. Call today to schedule your private tour.



Commercial Real Estate

For Further Information

Please Contact
Chris Roewe, Broker
chrisroewe@hotmail.com

208 Vine St

KELSO WA 98626

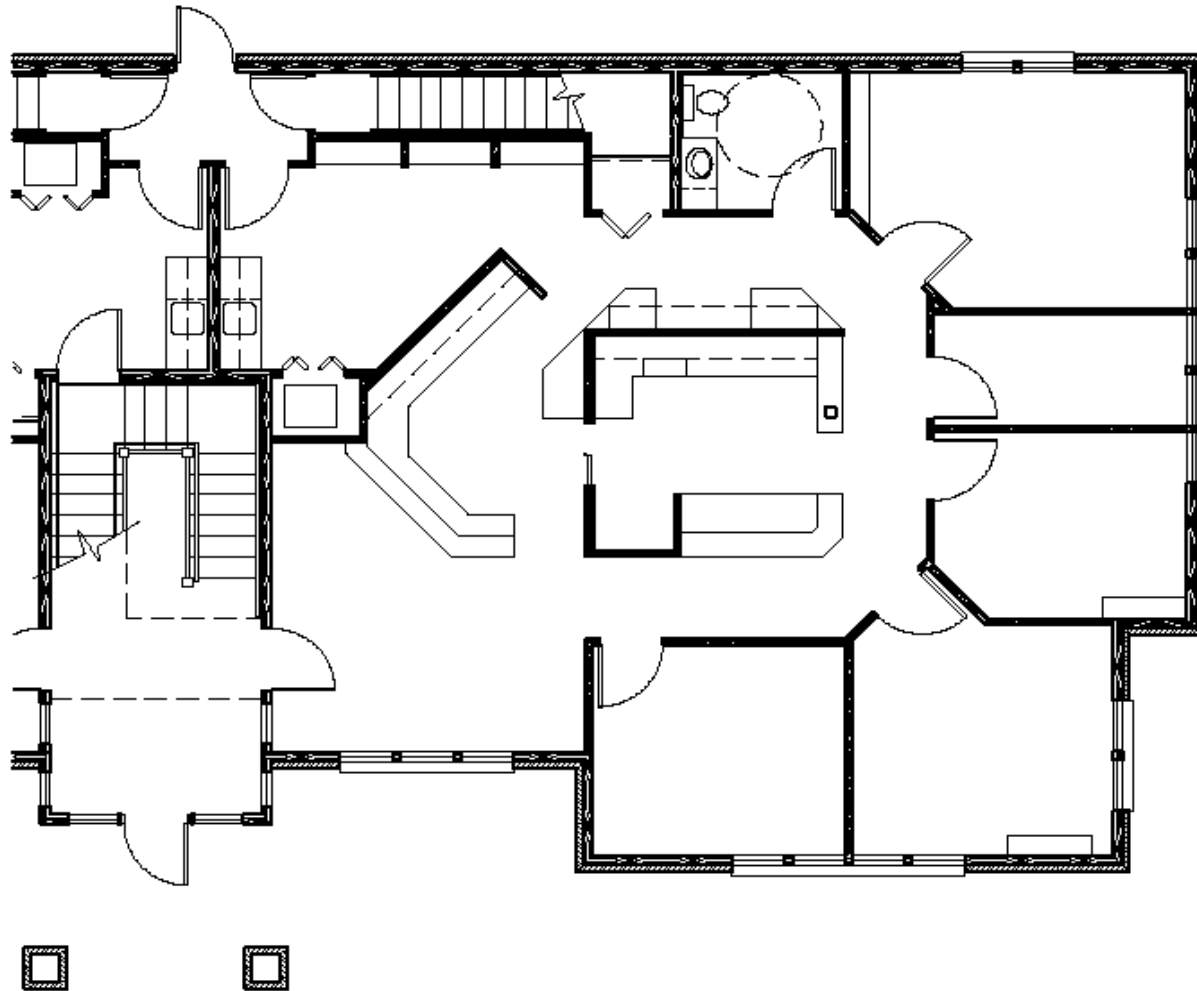
P 360.501.5500 or F 360.501.6051

The information contained herein has been obtained from sources we understand to be reliable. Whilst we do not doubt its accuracy it has not been verified & we make no guarantees, warranty or representations about it. Any projections, opinions, assumptions or estimates used are for example only. You & your advisors should conduct a careful independent investigation of the property to determine the property's satisfaction to your needs.

© Woodford Commercial Real Estate.

Floor Plan

950 12th Avenue —
Longview



The information contained herein has been obtained from sources we understand to be reliable. Whilst we do not doubt its accuracy it has not been verified & we make no guarantees, warranty or representations about it. Any projections, opinions, assumptions or estimates used are for example only. You & your advisors should conduct a careful independent investigation of the property to determine the property's satisfaction to your needs.

© Woodford Commercial Real Estate.

Interior Photos

950 12th Avenue —
Longview



The information contained herein has been obtained from sources we understand to be reliable. Whilst we do not doubt its accuracy it has not been verified & we make no guarantees, warranty or representations about it. Any projections, opinions, assumptions or estimates used are for example only. You & your advisors should conduct a careful independent investigation of the property to determine the property's satisfaction to your needs.
© Woodford Commercial Real Estate.